

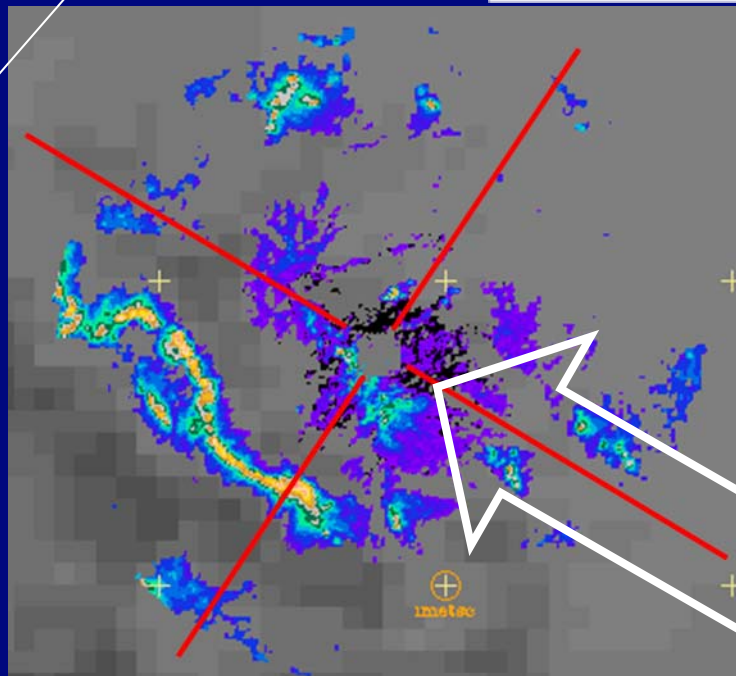
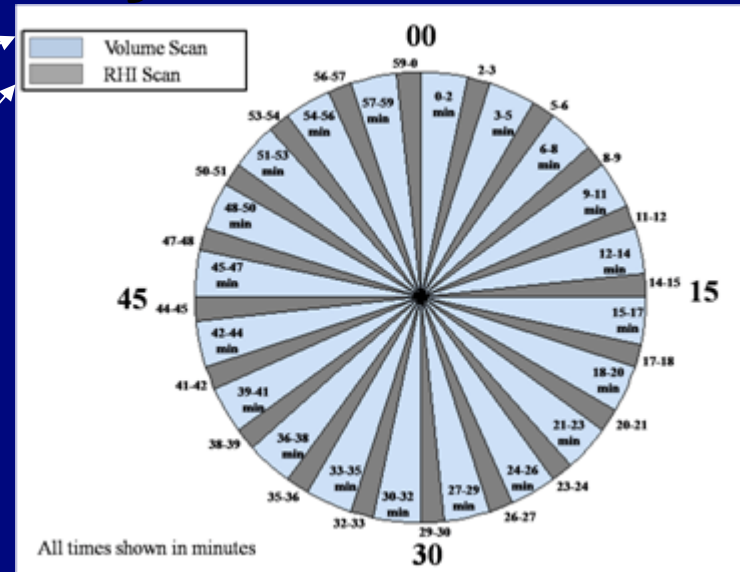
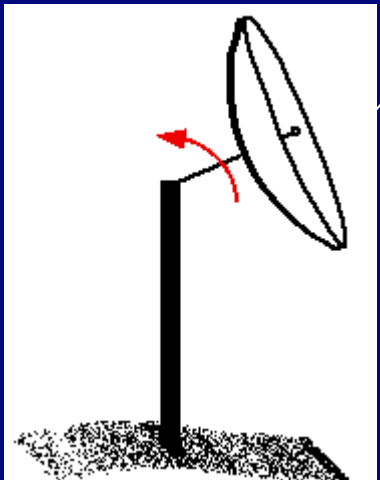
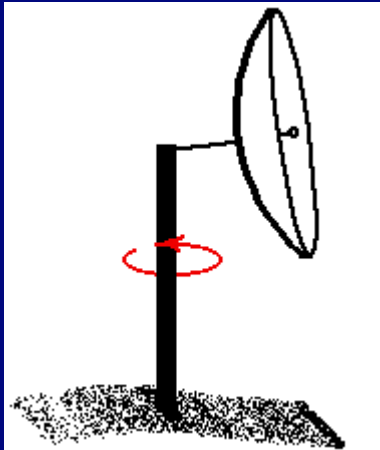
Highlights from C-band radar data collection on the NOAA Ship Ronald H. Brown

Sandra Yuter¹, Matt Miller¹,
Jake Crouch¹, David Stark¹,
Chris Fairall², Dan Wolfe², Sergio Pezoa²

¹North Carolina State University

²NOAA ESRL

Radar scan strategy for VOCALS repeats every 3 min

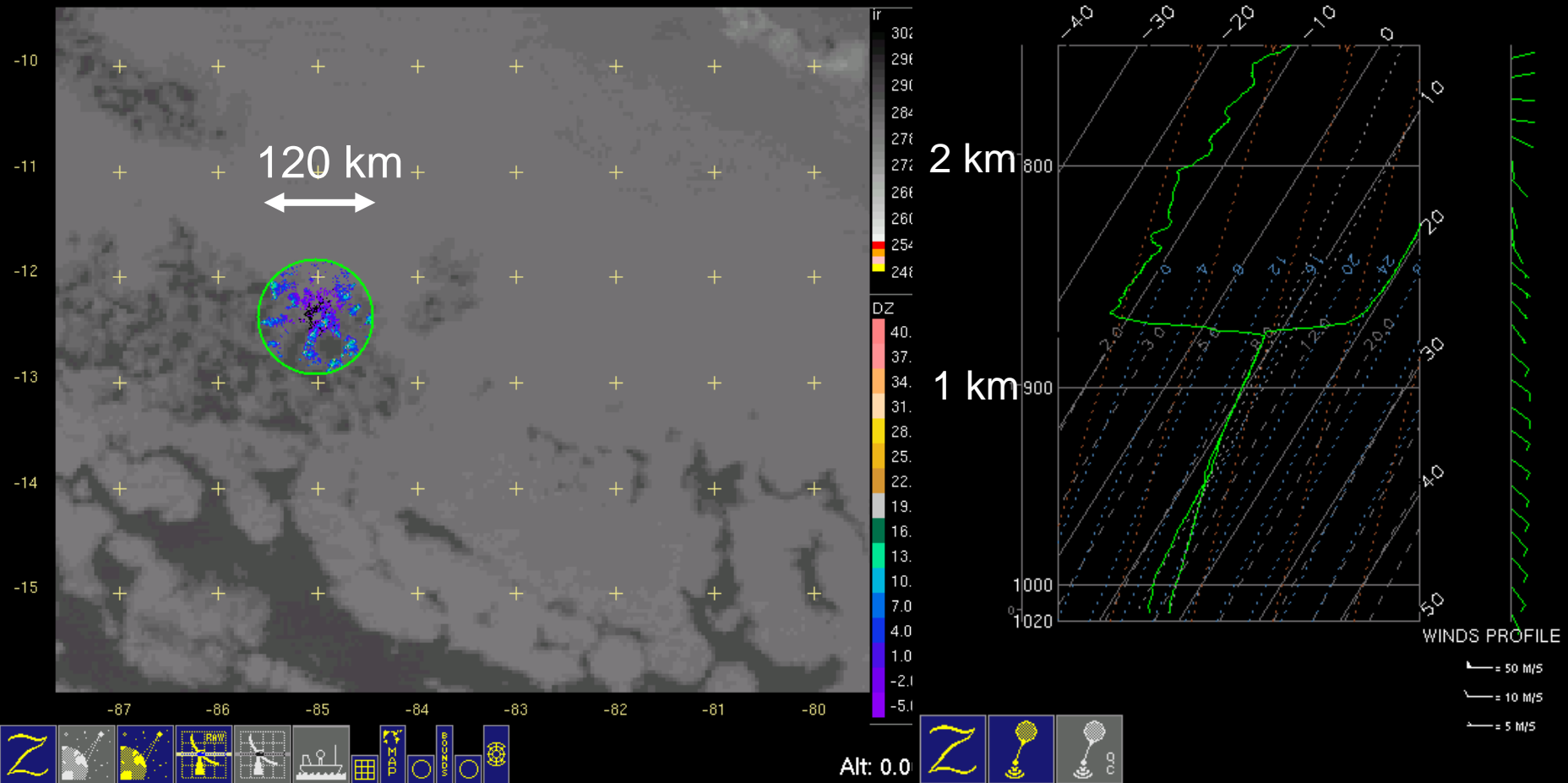


Prevailing wind
from 125°
RHIs at 35°, 125°,
215°, and 305°
azimuth

23 October 2008, open cells with drizzle

23-oct-2008,12:09:00 Skew-t plot for **sounding/brown** (
23-Oct-2008,11:00:03).

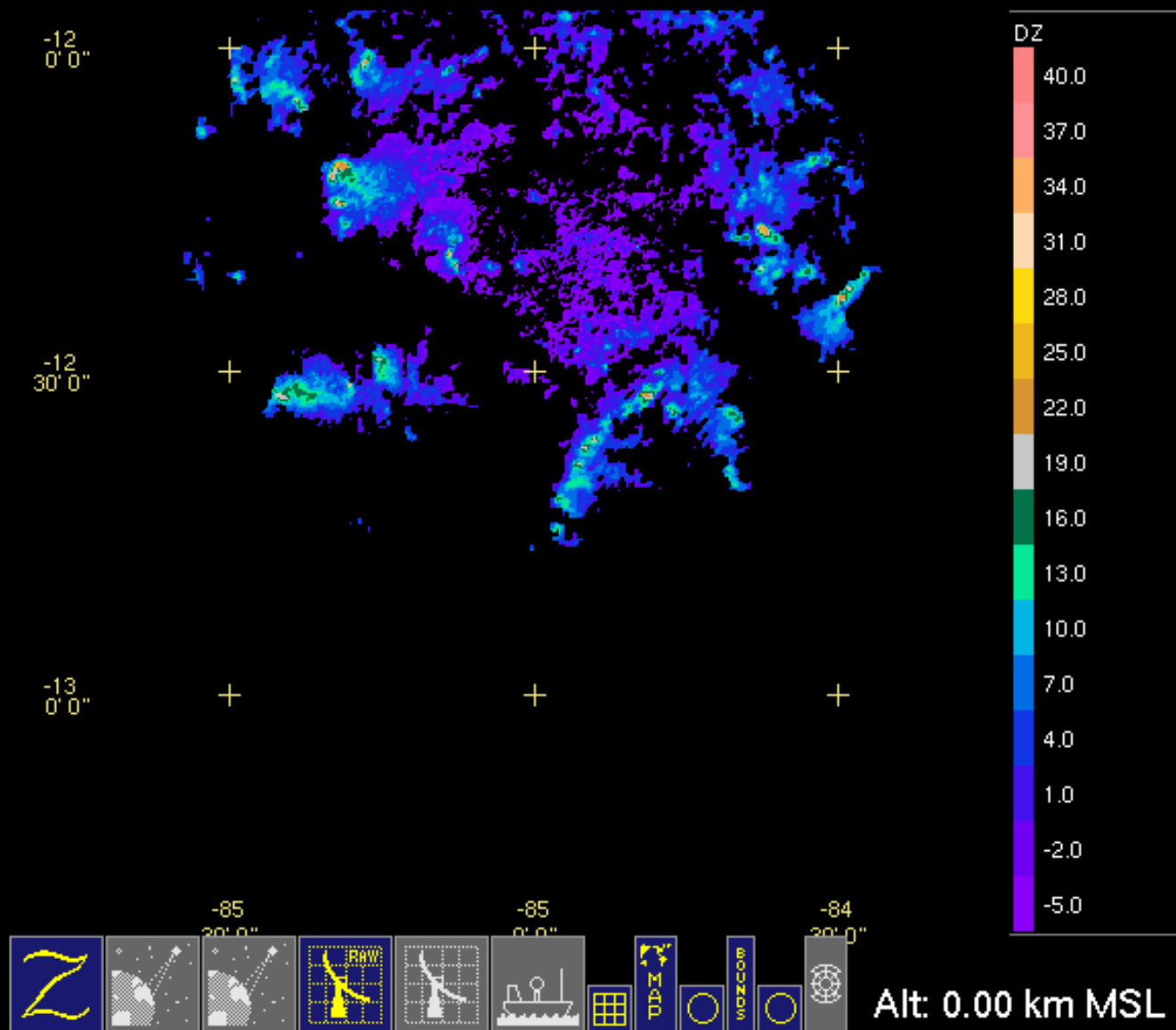
23-oct-2008,12:01:00 Zebra projection: goesirbig ir plot. RhbC_2d DZ filled contour.

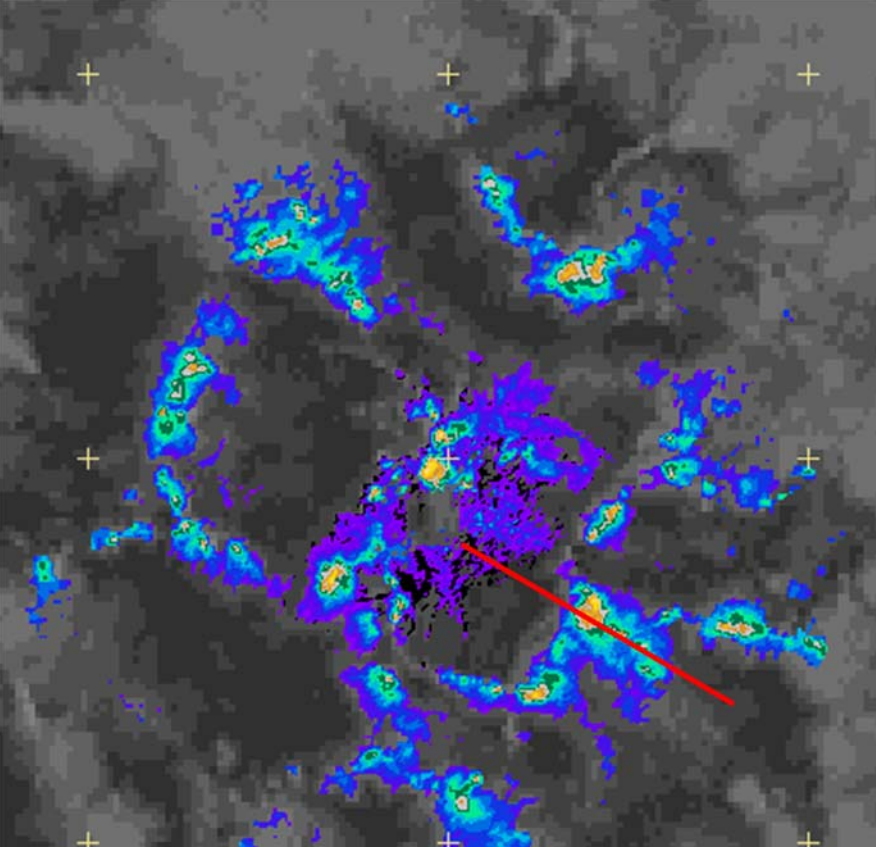


Alt: 0.0

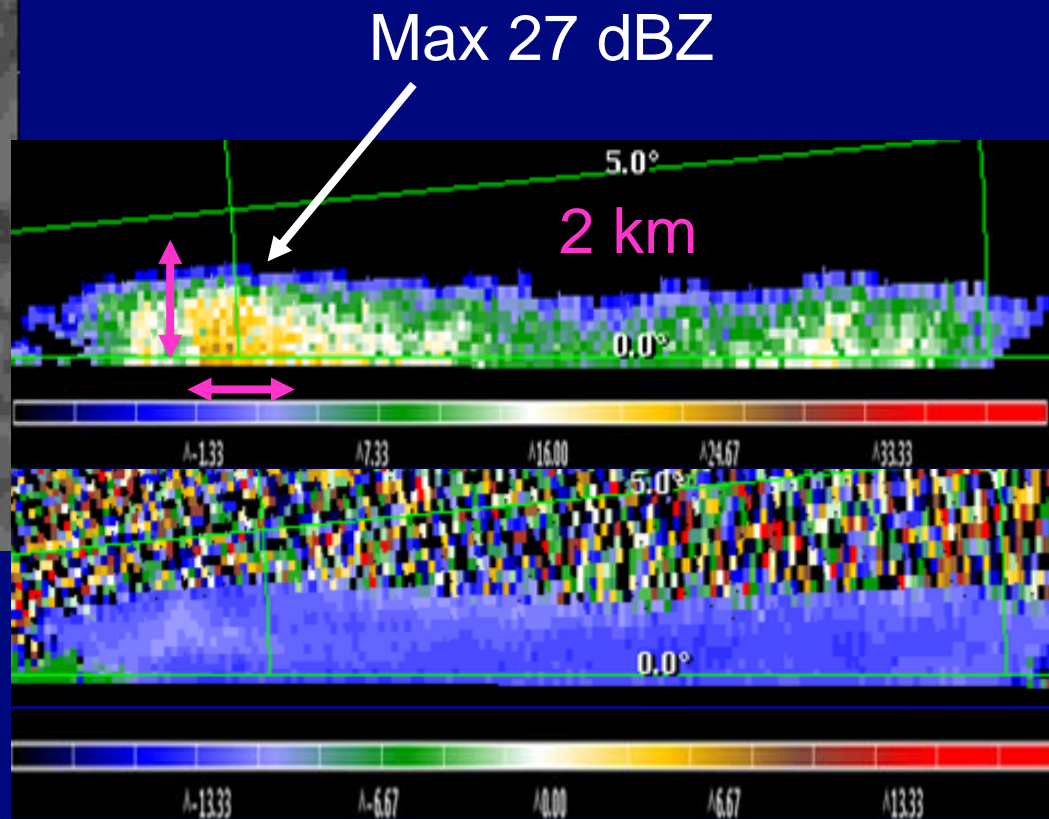
C-band radar data from 23 October

23-oct-2008,11:33:00 Zebra projection: RhbC_2d DZ filled contour.





1200 UTC 23 Oct 08
drizzle cells on open
cell pattern

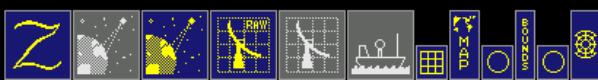
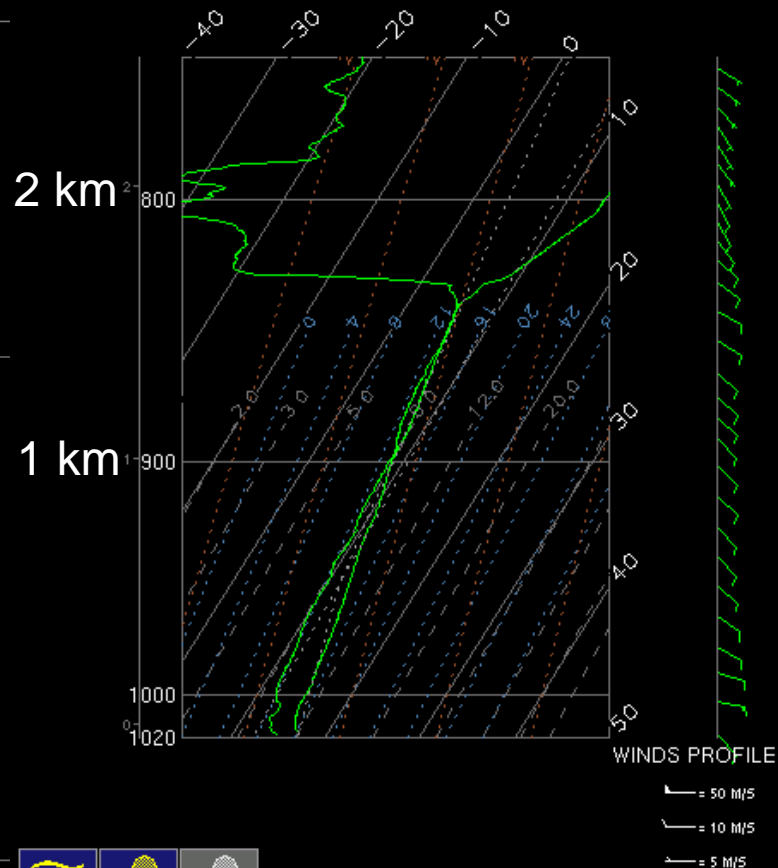
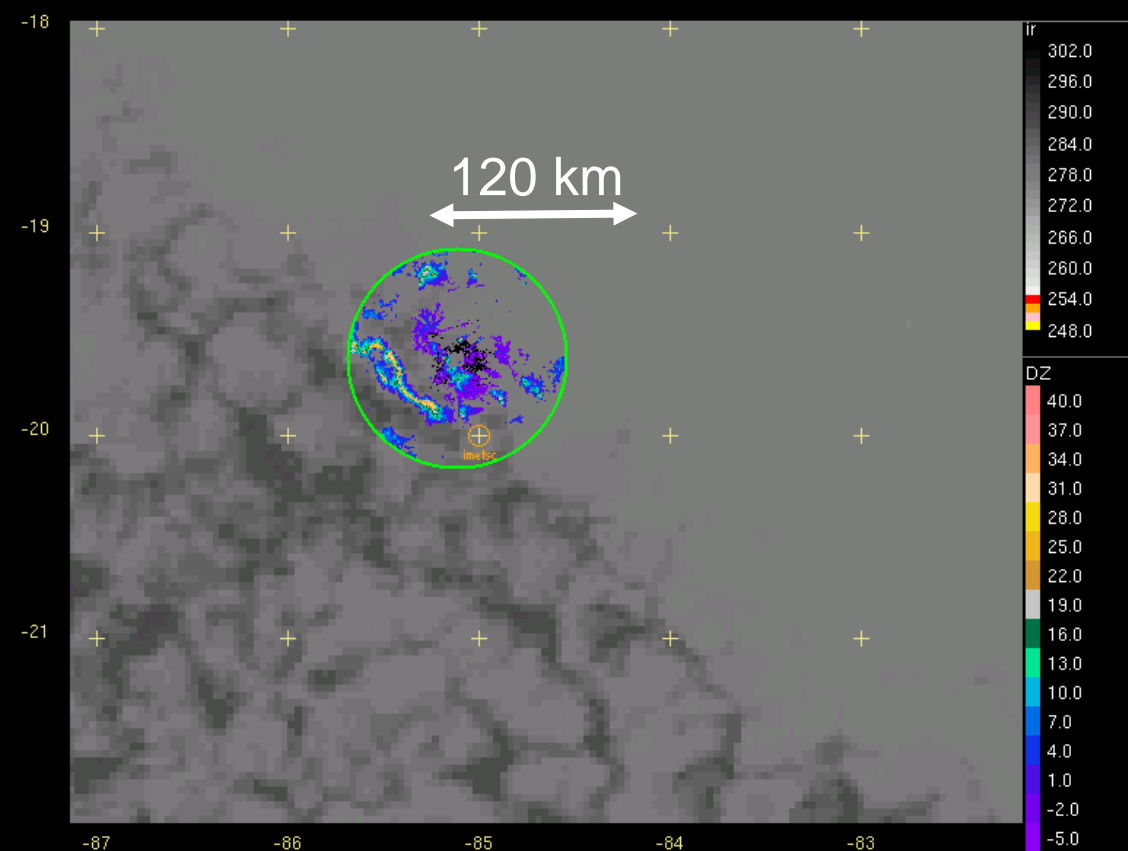


Unexpectedly strong convection

26 Oct 2008, 12 UTC

26-oct-2008,12:09:00 Skew-t plot for **sounding/brown**
26-Oct-2008,11:00:03).

26-oct-2008,12:01:00 Zebra projection: goesirbig ir plot. RhbC_2d DZ filled contour.

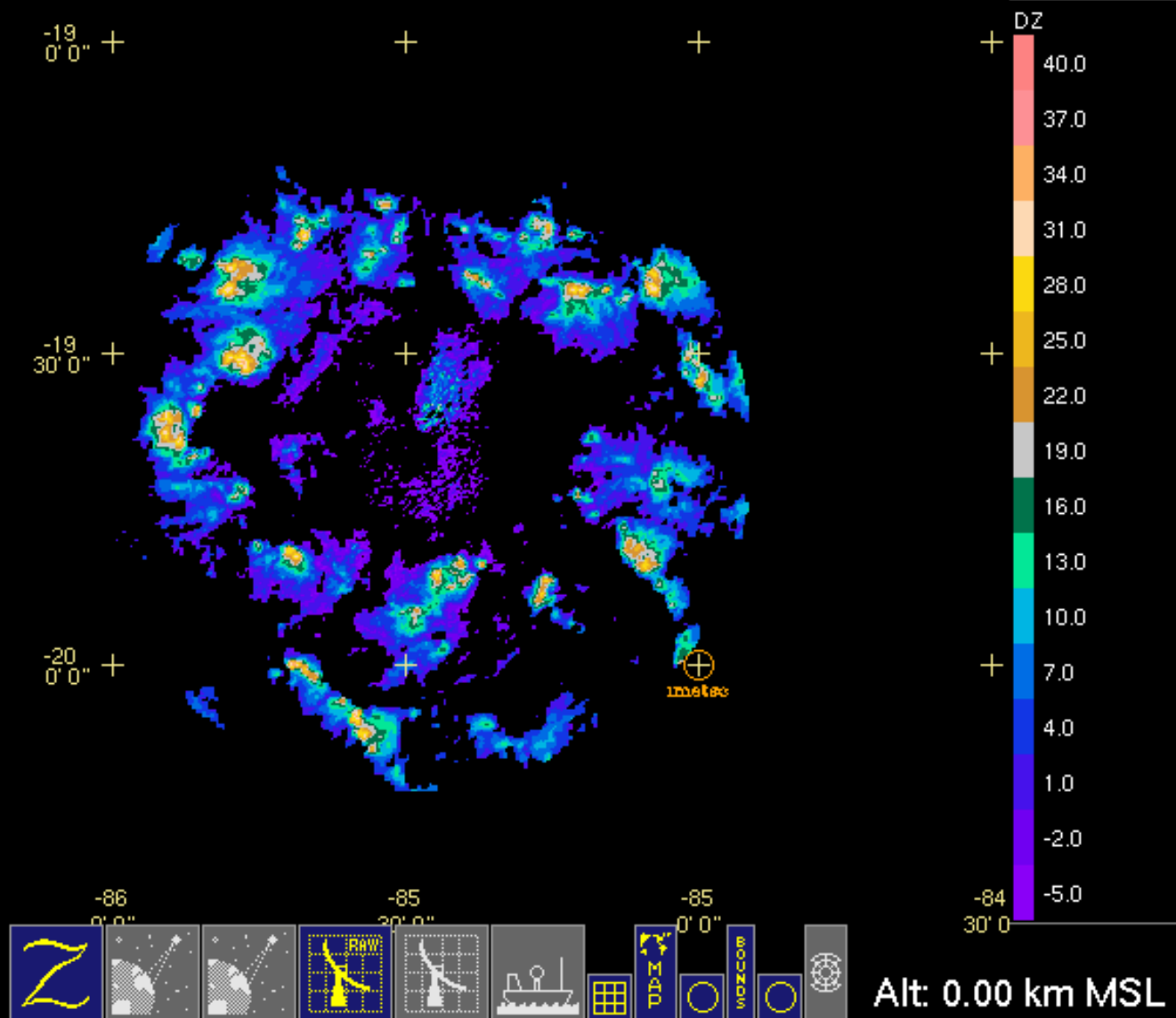


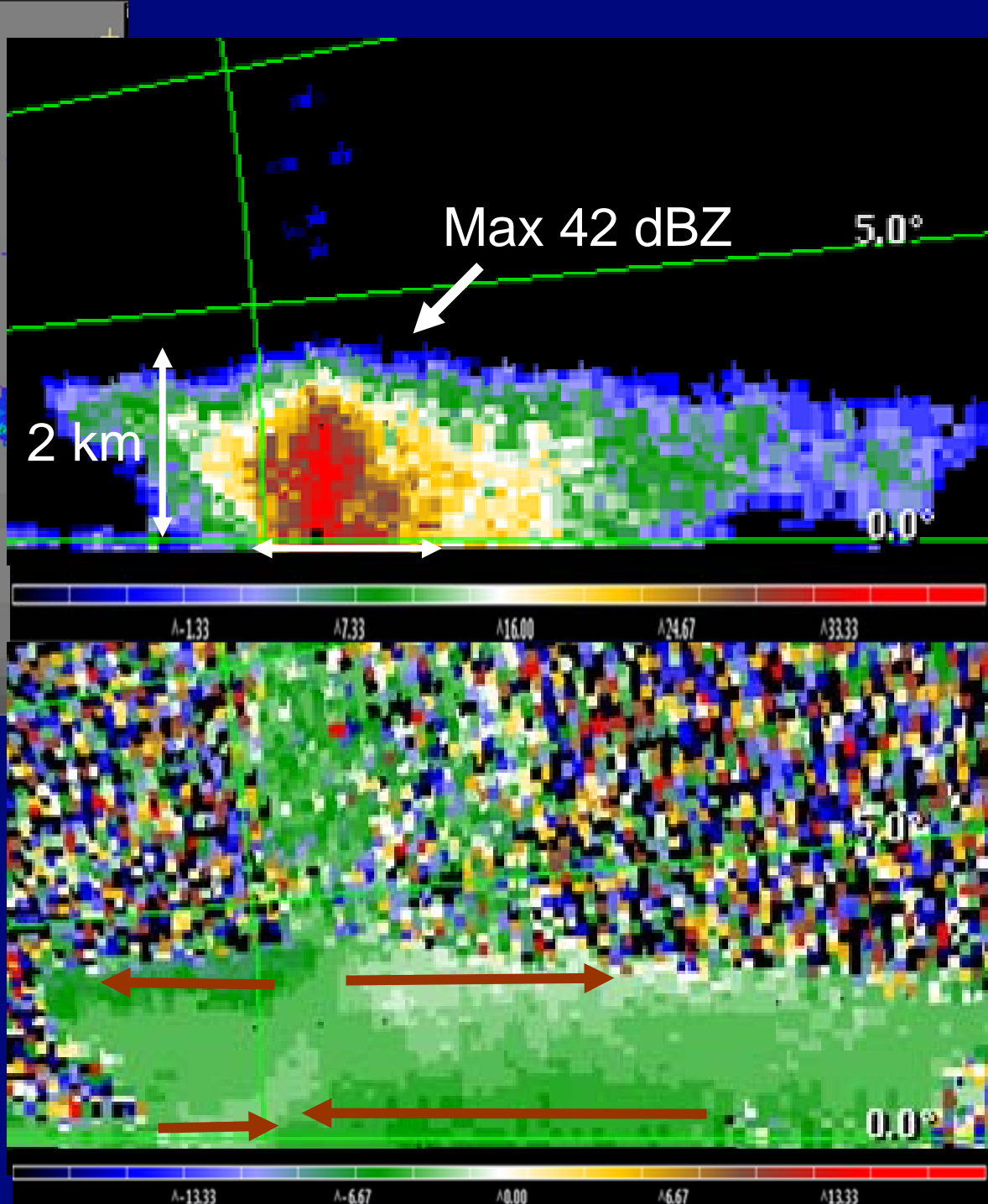
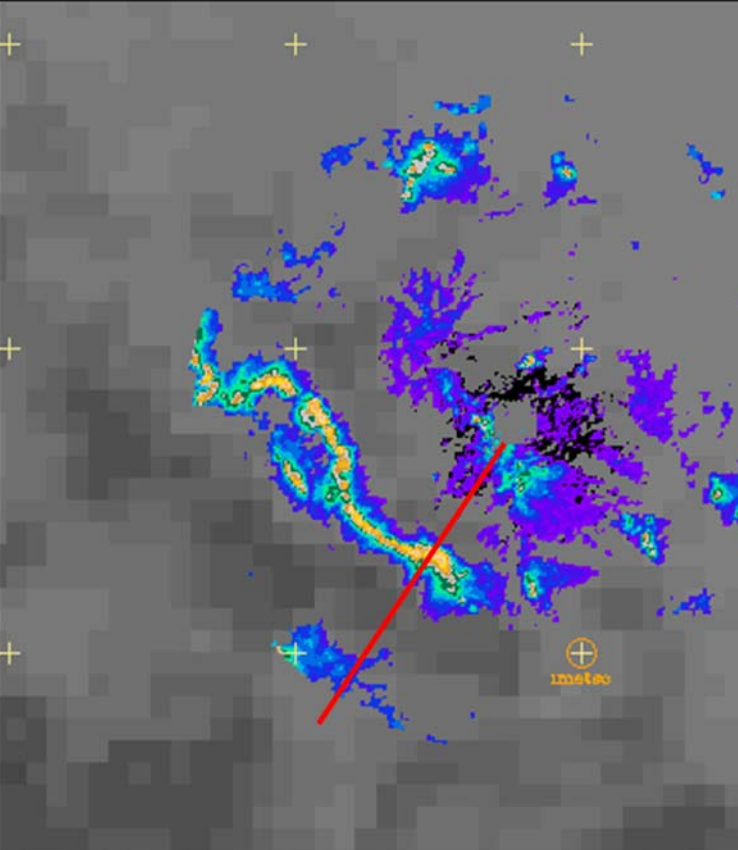
Alt: 0.00 km



Unexpectedly strong convection

26-oct-2008,10:03:00 Zebra projection: RhbC_2d DZ filled contour.





1200 UTC 26 Oct 08
Line of strong cells
capped by inversion

Data Perusal Website

VOCALS Image Viewer - Windows Internet Explorer



precip.meas.ncsu.edu/vocals/index.php

end to Google



Gmail - arctic data - s...

Registration & Record...

VOCALS Image Wi...

WolfWare - Grade Bo...

sartorial definition | Di...

Palin sartorial - Googl...



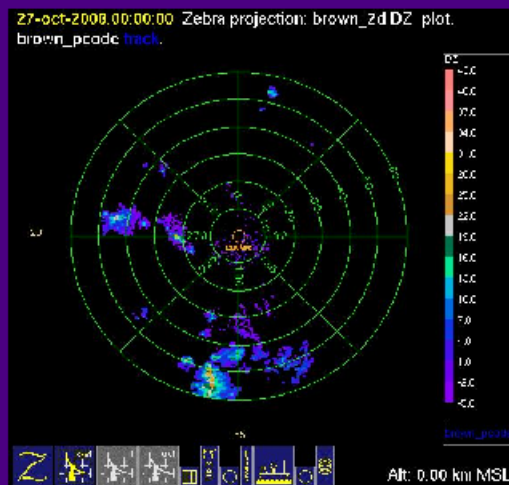
October 2008

Wednesday Oct. 20th
Tuesday Oct. 21st
Wednesday Oct. 22nd
Thursday Oct. 23rd
Friday Oct. 24th
Saturday Oct. 25th
Sunday Oct. 26th
Monday Oct. 27th
Tuesday Oct. 28th
Wednesday Oct. 29th
Thursday Oct. 30th
Friday Oct. 31st

November 2008

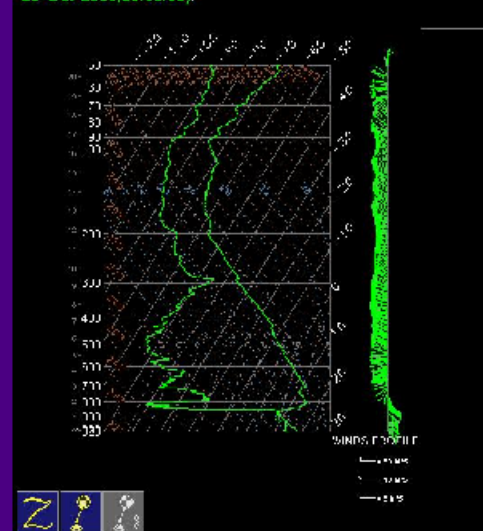
Saturday Nov. 1st
Sunday Nov. 2nd
Monday Nov. 3rd
Sunday Nov. 9th
Monday Nov. 10th
Tuesday Nov. 11th
Wednesday Nov. 12th
Thursday Nov. 13th
Friday Nov. 14th
Saturday Nov. 15th
Sunday Nov. 16th
Monday Nov. 17th
Tuesday Nov. 18th
Wednesday Nov. 19th
Thursday Nov. 20th
Friday Nov. 21st
Saturday Nov. 22nd
Sunday Nov. 23rd
Monday Nov. 24th
Tuesday Nov. 25th

Hourly Radar



Hourly Soundings

27-oct-2008,00:01:00 Skew-t plot for sounding/brown (26-Oct-2008,23:00:36).



Cloud Pictures



Done

Internet



Perusal images including cloud photos, upper air soundings, and C-band radar data for each day

Daily Clouds Page - Windows Internet Explorer

precip.meas.ncsu.edu/vocals/index.php

Cloud Image Viewer for Wednesday Oct. 29th
North Carolina State University
Marine Earth and Atmospheric Sciences

Cloud photo page for 29 Oct 2008

| | 330° | Bow | 0° | 30° | 60° | Starboard | 90° | 120° | 150° | Stern | 180° | 210° | 240° | Port | 270° | 300° |
|--------|------|-----|----|-----|-----|-----------|-----|------|------|-------|------|------|------|------|------|------|
| 12 UTC | | | | | | | | | | | | | | | | |
| 14 UTC | | | | | | | | | | | | | | | | |
| 16 UTC | | | | | | | | | | | | | | | | |
| 18 UTC | | | | | | | | | | | | | | | | |
| 20 UTC | | | | | | | | | | | | | | | | |
| 22 UTC | | | | | | | | | | | | | | | | |

View from Bow (330°)

Mouse over 18 UTC

start

3 Windows... Microsoft W... 3 Internet ... 2 Mozilla T... Adobe Acro... 6 Microsoft... 2:33 PM

precip.meas.ncsu.edu/vocals/index.php

Cloud Image Viewer for Wednesday Oct. 29th
North Carolina State University
Marine Earth and Atmospheric Sciences

Cloud photo page for 29 Oct 2008

12 UTC

14 UTC

16 UTC

18 UTC

20 UTC

22 UTC

Bow

Starboard

Stern

Port

330°

0°

30°

60°

90°

120°

150°

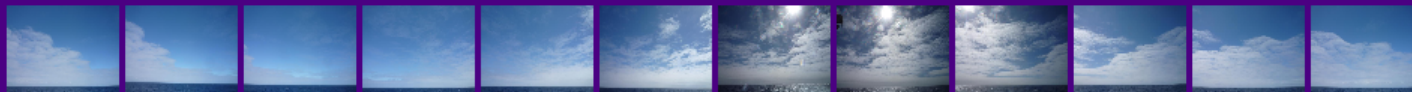
180°

210°

240°

270°

300°



View from Bow (330°)



Mouse
over
20
UTC