



# The SALLJEX Archive at UCAR/JOSS

**José Meitín**

**NOAA Office of Global Programs**

`meitin@ucar.edu`

**Steve Williams**

**UCAR Joint Office for Science Support**

`sfw@ucar.edu`





[www.joss.ucar.edu/salljex/dm/](http://www.joss.ucar.edu/salljex/dm/)

## DISTRIBUTED SALLJEX LONG-TERM DATA ARCHIVE

- [\*SALLJEX Preliminary Master Dataset List\*](#)
- [\*U.S. Data Center\*](#) - CODIAC Interactive Data Management System located at the University Corporation for Atmospheric Research (UCAR) Joint Office for Science Support (JOSS), Boulder, Colorado, USA.
- [\*SALLJEX On-line Field Catalog\*](#) (including preliminary products)

## DATA SUBMISSION

- [\*SALLJEX Data Submission Instructions\*](#)
- [\*SALLJEX Data Submission Guidelines\*](#)

## DOCUMENTS

- [\*SALLJEX Data Policy\*](#)
- [\*SALLJEX Data Management Plan\*](#)

## Other Links



## UCAR / JOSS Interactive Data Catalog



# SALLJEX Project Description

Navigator: [Datasets](#) | [Sample Imagery](#)

## Summary

The South American Low-Level Jet Experiment (SALLJEX), a component of the CLIVAR international effort in order to contribute to the understanding of the role of the low-level jet in moisture and energy exchange between the tropics and extratropics and related aspects of climate variability.

## Objectives

The goals are to improve short and long term prediction by obtaining an improved temporal and spatial structure description of the low-level jet, evaluate the veracity of numerical representation of the low-level jet, and determine improvements of the initial state representation and model parameterizations required to improve prediction.

## Temporal Coverage

Begin Date: 20021115, End Date: 20030215

## Spatial Coverage

Minimum Latitude: -40.000000, Minimum Longitude: -85.000000  
Maximum Latitude: 0.000000, Maximum Longitude: -35.000000

**JOSS**  
**relational database system**

[www.joss.ucar.edu/codiac/](http://www.joss.ucar.edu/codiac/)

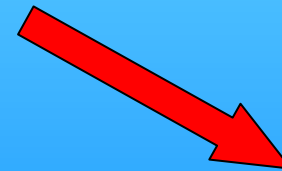
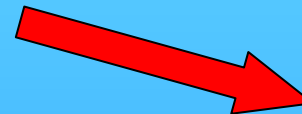
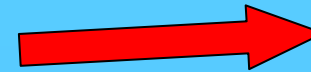
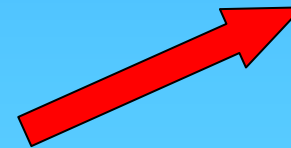
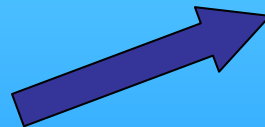
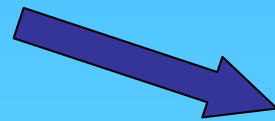
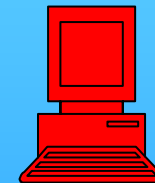
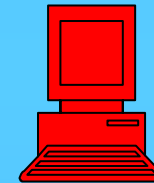
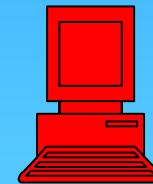
## Data Sources



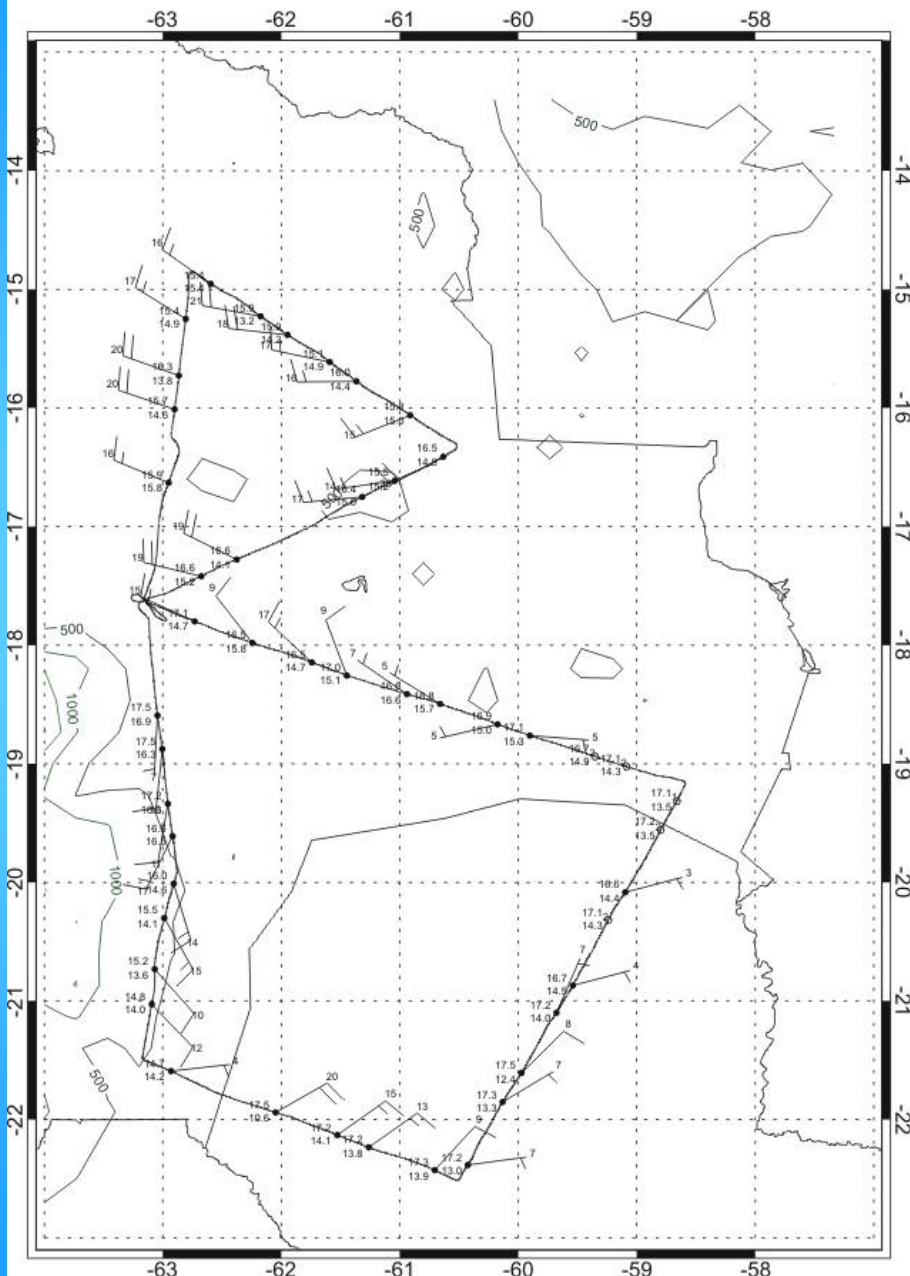
## JOSS Interactive Data Catalog



## SALLJEX Community



# SALLJEX Flight (Level= 800\_mb) 2003/01/18

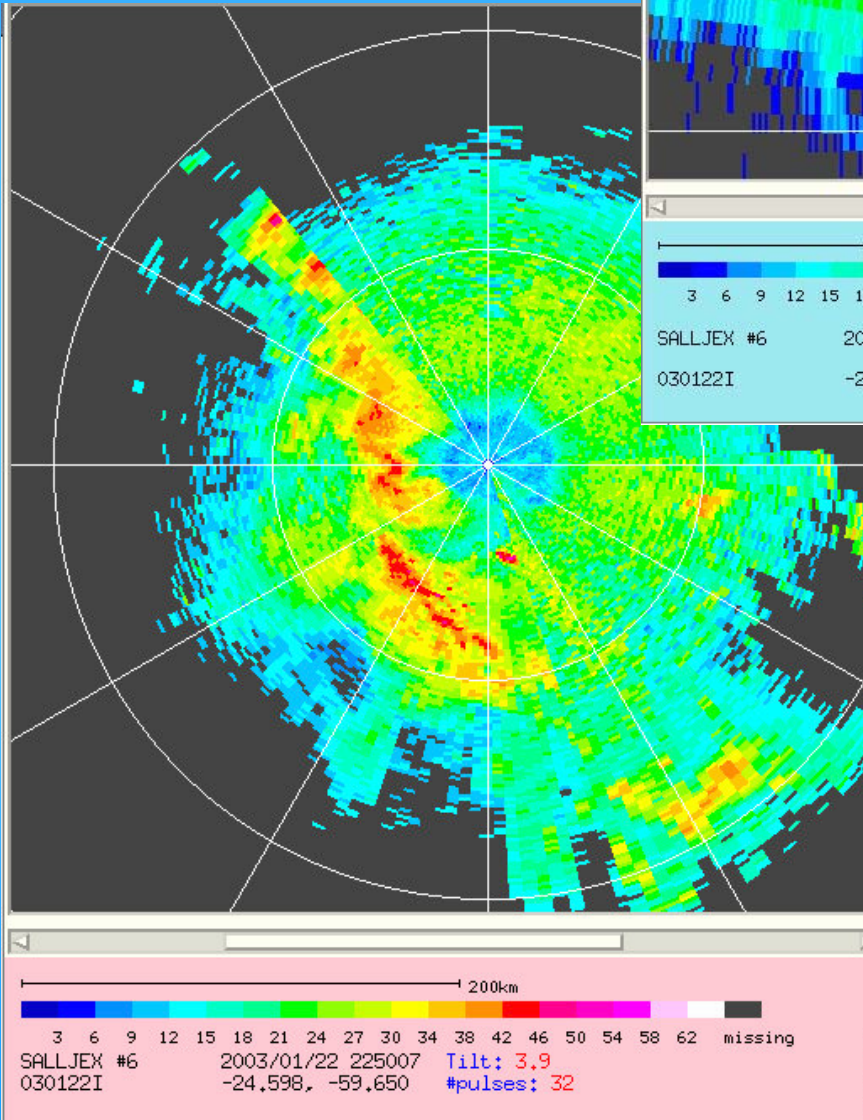
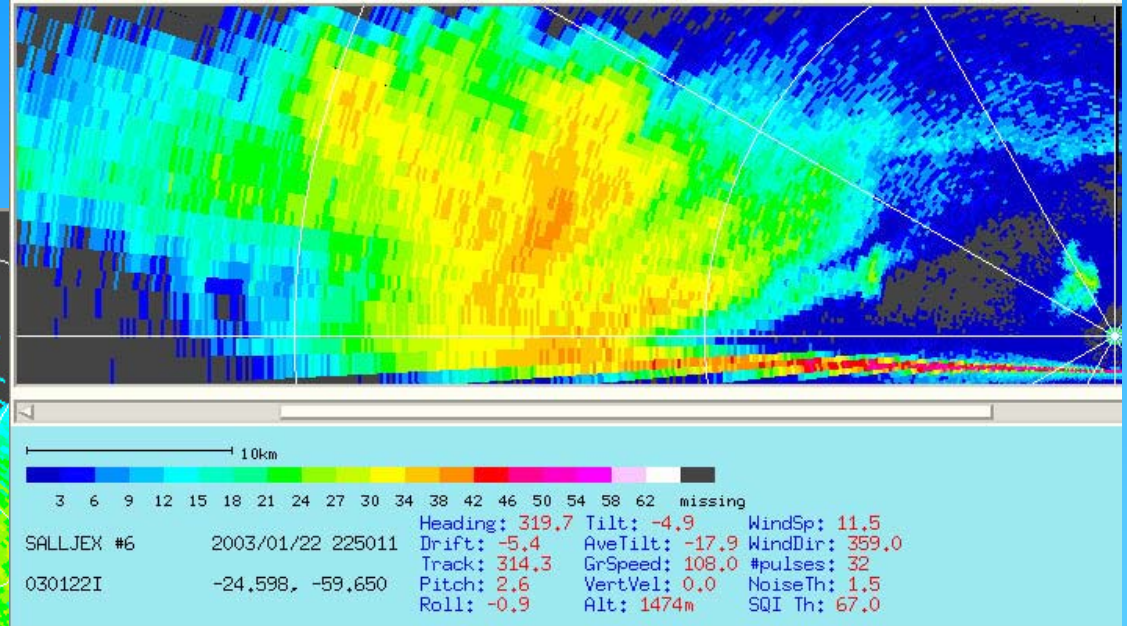


## SALLJEX Flight level data

- Preliminary
- Final dataset (May 2003)
- NetCDF format (Aug 03)







## SALLJEX airborne radar data

- gif archive
- digital files



# SALLJEX / JOSS research upper-air inventory



SALLJEX Sounding and Pibal Inventory

Argentina	High Resolution			Pibal			
	Chemical	Resistencia	Santiago	Chemical	Cordoba	Joaquin	Pampa
2002							
15-Nov			6	01,06,21		21 11,21	11,21
16-Nov	6					21 11,21	11,21
17-Nov	6			06,11,21		21 11,21	11,21
18-Nov	6			01,06,11		21	11,21
19-Nov	6				21	21 11,21	15,21
20-Nov	6			11,21		21 11,21	12,21
21-Nov	6			06,21		21	
22-Nov	6		7	06,21		21	15,18
23-Nov	6			06,21			21 11,21
24-Nov	6		6	06,12,21		11,21	11,21
25-Nov	6			06,11,21		21	11,21
26-Nov	6	6		12,21		21 11,21	11,21
27-Nov	00,06	6	6	06,14,21		21	11
28-Nov	6			12,21		21	
29-Nov	6	6		06,11,21			21
30-Nov	6	6		06,21			11
1-Dec	6	6	6			21	21
2-Dec		6	6		22	21	21
3-Dec	6	6	6				11
4-Dec	6	6	7		21	21	11 8
5-Dec	6	6	6	06,21			11 21
6-Dec		6	12	15,21			11
7-Dec	6	6	6	06,13,21			11,21
8-Dec	6	6	6				21
9-Dec	6	6	6		21		11,21
10-Dec	6	6	6	06,11,21		15,21	13,21

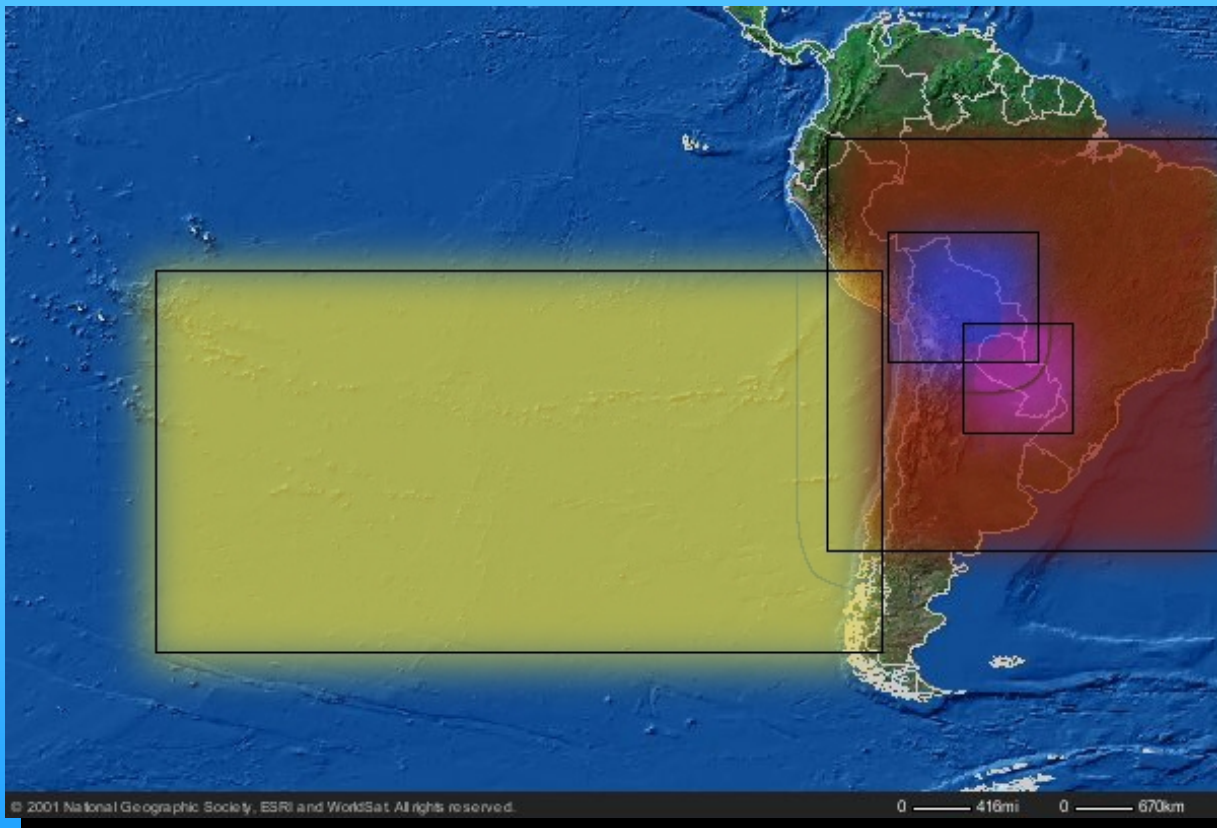








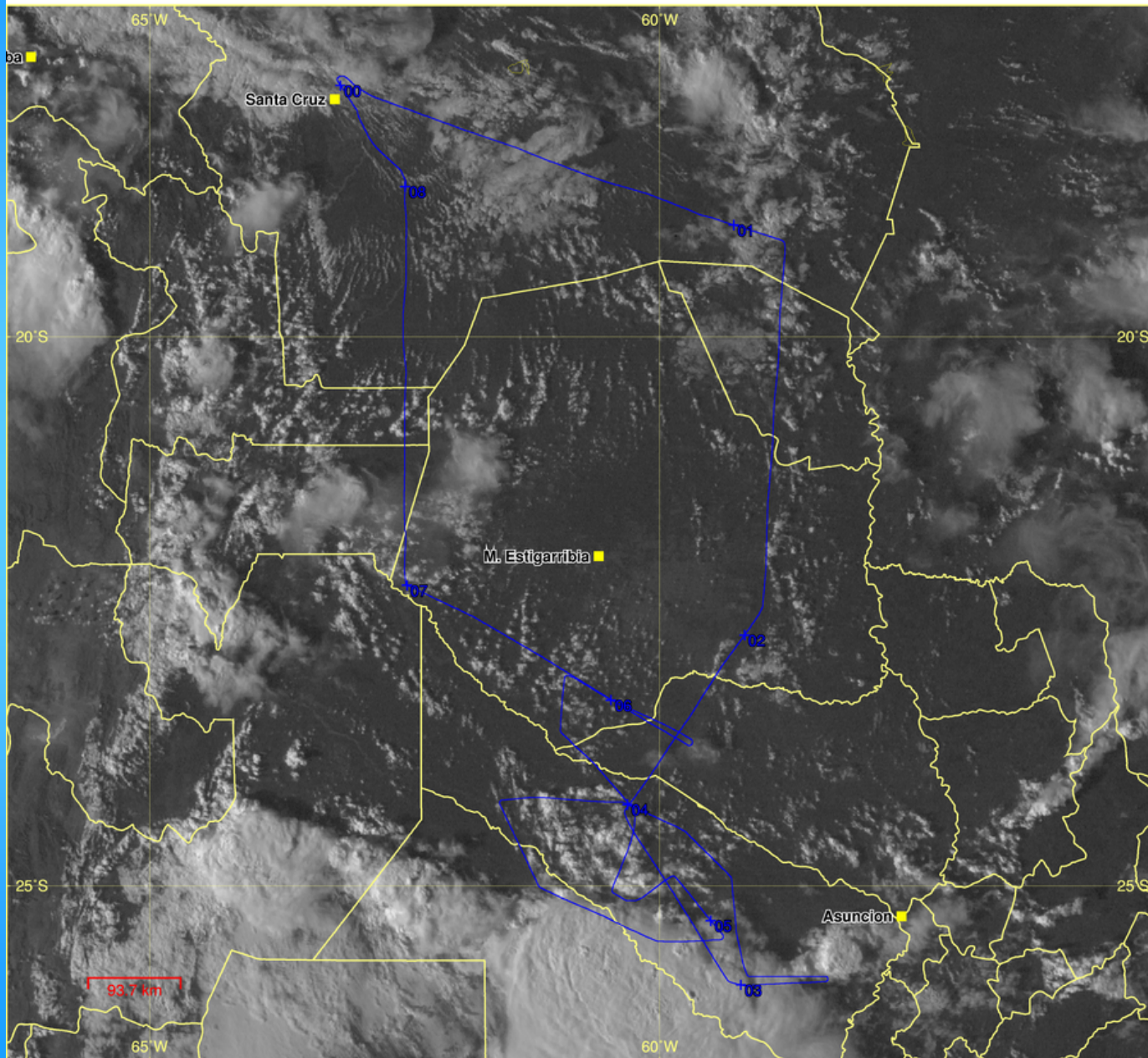
## SALLJEX-JOSS Satellite Digital Archive (Dec 2000- to present)



© 2001 National Geographic Society, ESRI and WorldSat. All rights reserved.

0 416mi 0 670km

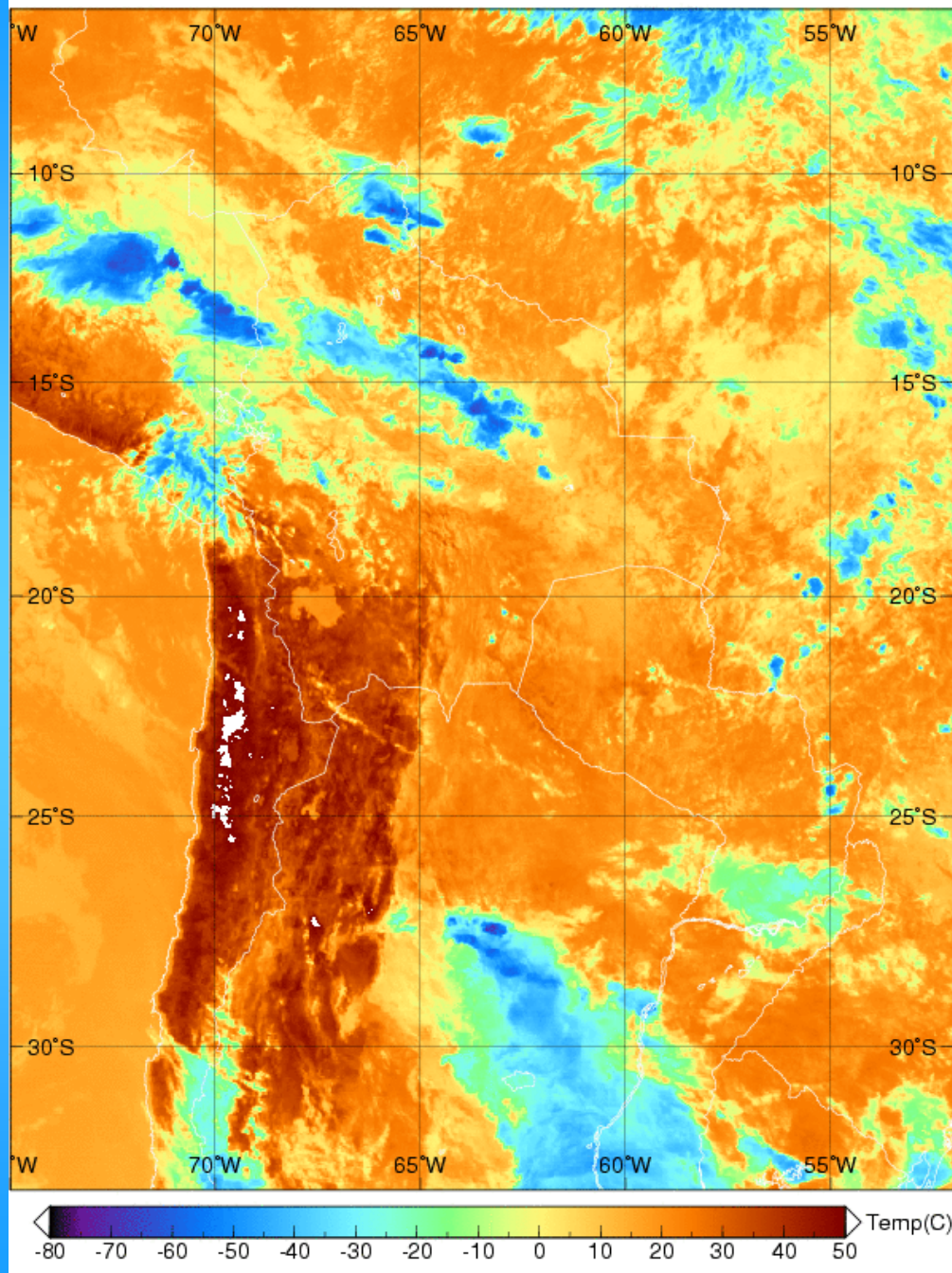




# SALLJEX Flight tracks and Satellite Composite Image







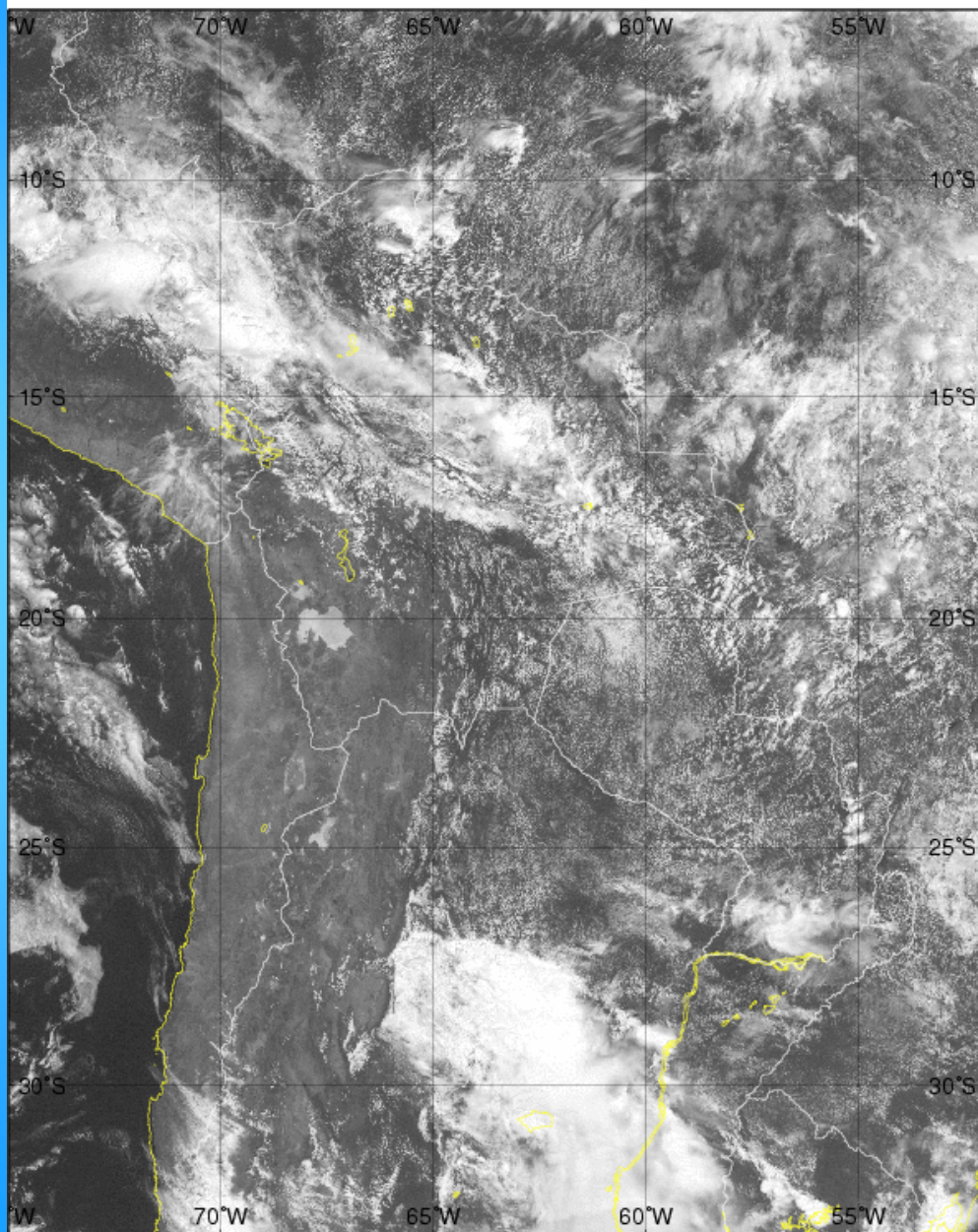
# SALLJEX composite satellite 9-hour false-color IR images



goes-8 VIS 200301221509 - 200301221515



# SALLJEX Composite Satellite 9-hour 1-km visible images







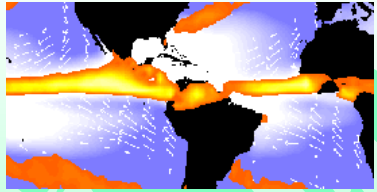
# **SALLJEX Data Management Summary**

- **NOAA P-3 flight level data (final)**
  - **Binary files**
  - **NetCDF files**
- **NOAA P-3 airborne radar data**
  - **Binary files**
  - **Gif archive**
- **Upper-air data (raobs, pibals, GTS)**
- **Numerical Model run (campaign, Exp 1 & 2)**
- **Satellite files and imagery**
- **Precipitation data**



# VAMOS DATA MANAGEMENT

- Data Archives/Links include:
  - Surface/upper air
  - Satellite
  - Ocean
  - Model Output (including Reanalysis)
- Access to Related Projects
- Data Information Server located at UCAR  
<http://www.joss.ucar.edu/vamos/>
- “Mirror” Data Information Server at IAI  
<http://vamos.iai.int/>



# PACS DATA MANAGEMENT SUMMARY

- Long-term enhanced climate monitoring with intensive observational periods (IOPs); e.g. TEPPS, EPIC, SALLJEX....
- Provides stability and continuity with common formats, Data portal, Data archival, Ease of access
- Satellite climatology with high resolution sectors routinely produced and archived (3+ years.....)
- On-line PACS Data Management Server:  
<http://www.joss.ucar.edu/pacs/>



# PACS DATA MANAGEMENT CENTER

## Data Sources:

- [CODIAC Interactive Data Management System](#)
- [International Research Institute Climate Data Library](#)

## Satellite

- [3-hourly Visible Imagery over continental South America](#)
- [3-hourly Visible Imagery over eastern South Pacific Ocean](#)
- [High resolution \(1-km\) Visible Imagery sector over Bolivia](#)
- [High resolution \(1-km\) Visible Imagery sector over Paraguay](#)
- [PACS Satellite Products](#) (NOAA/ETL)
- [Pentad and Monthly Average SSM/I Satellite Products](#), (NOAA/ETL)
- [Satellite Observations of the North American Monsoon](#) (NOAA/ETL)
- [NASA/JPL TOPEX/POSEIDON](#)
- [PACS SSM/I Products Archive](#)
- [GOES-East & West Full-Disk Browse Archive \(Gifs\)](#)
- [International Satellite Cloud Climatology Project \(ISSCP\) Data](#)
- [Tropical Rainfall Measuring Mission \(TRMM\)](#)
- [NASA/NOAA AVHRR Pathfinder SST](#)
- [University of Rhode Island SST Satellite Image Archive](#)
- [SeaWiFS](#)
- [NOAA/NESDIS Satellite Active Archive](#)
- [Outgoing Longwave Radiation and Highly Reflective Clouds Datasets](#) at SUNY (Stony Brook)

## Oceanographic

- [Distributed Oceanographic Data System \(DODS\)](#)
- [ICES Oceanographic Data Centre](#)

[Archives](#)[Satellite](#)[Oceanographic](#)[Upper-Air](#)[Models](#)[Surface](#)[Radar](#)[Precipitation](#)[Other Projects](#)[Links](#)

© FlashButtons.com

[Contact Us](#)



# SALLJEX Master Dataset List at JOSS



## SALLJEX Archive Data Sets



### DATA CATEGORIES

[Aircraft Data](#)

[GTS Data](#)

[Model Output](#)

[Precipitation Data](#)




[Satellite Data](#)

[Surface Based Data](#)

[Upper Air Data](#)

[Back to JOSS SALLJEX Data Management](#)

Email comments & questions to the *SALLJEX* webmaster@ucar.edu

Data Set Name (Responsible group/PIs shown in parentheses)	Date Posted	Documentation
<b>Aircraft Data</b>		
<a href="#">Aircraft P-3 General Information, Mission Summaries</a>	2003-06-19	
<a href="#">Aircraft P-3 Meteorological State and Navigation Parameters - slow data [NetCDF] (NOAA/AOC)</a>	2003-08-04	
<a href="#">Aircraft P-3 Meteorology Doppler X-Band (Tail) Radar Radial Reflectivity Data (JOSS)</a>	2003-06-24	
<a href="#">Aircraft P-3 Meteorology Doppler X-Band (Tail) Radar Radial Velocity Data (JOSS)</a>	2003-06-24	
<a href="#">Aircraft P-3 Meteorology Lower Fuselage C-Band Radar Data (JOSS)</a>	2003-06-24	
<a href="#">Aircraft P-3 Meteorology Lower Fuselage C-Band Radar Imagery (JOSS)</a>	2003-06-19	
<a href="#">Aircraft P-3 Meteorology Navigation and State Parameters- netCDF format (JOSS)</a>	2003-08-05	
<a href="#">Aircraft P-3 Meteorology Navigation and State Parameters- Standard Tape Format (NOAA/AOC)</a>	2003-08-05	
<b>GTS Data</b>		