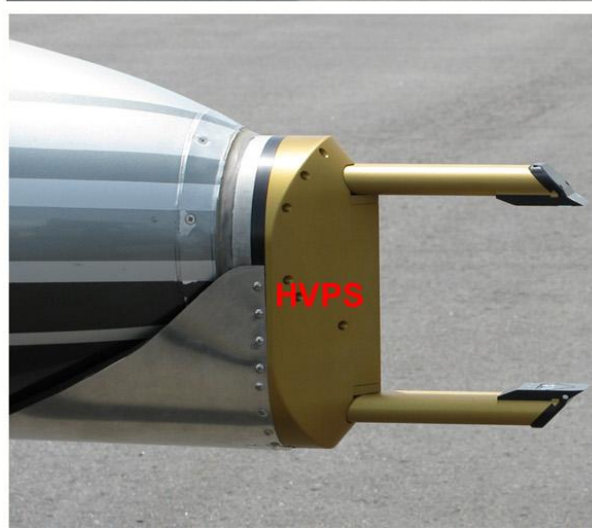
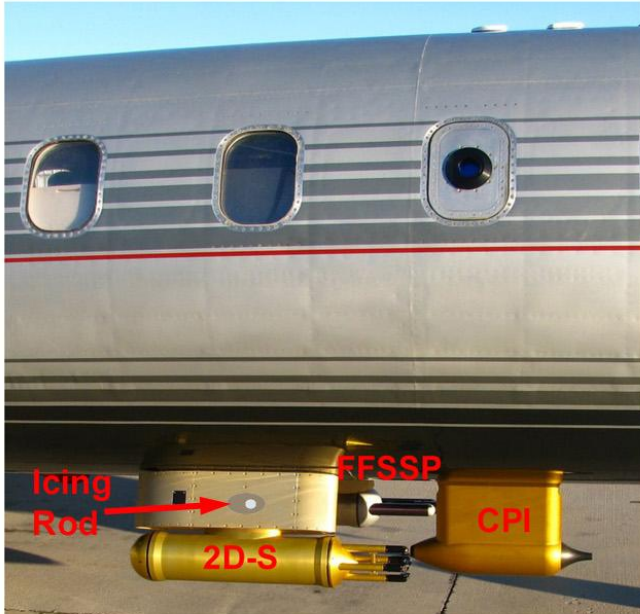


SPEC^{inc}

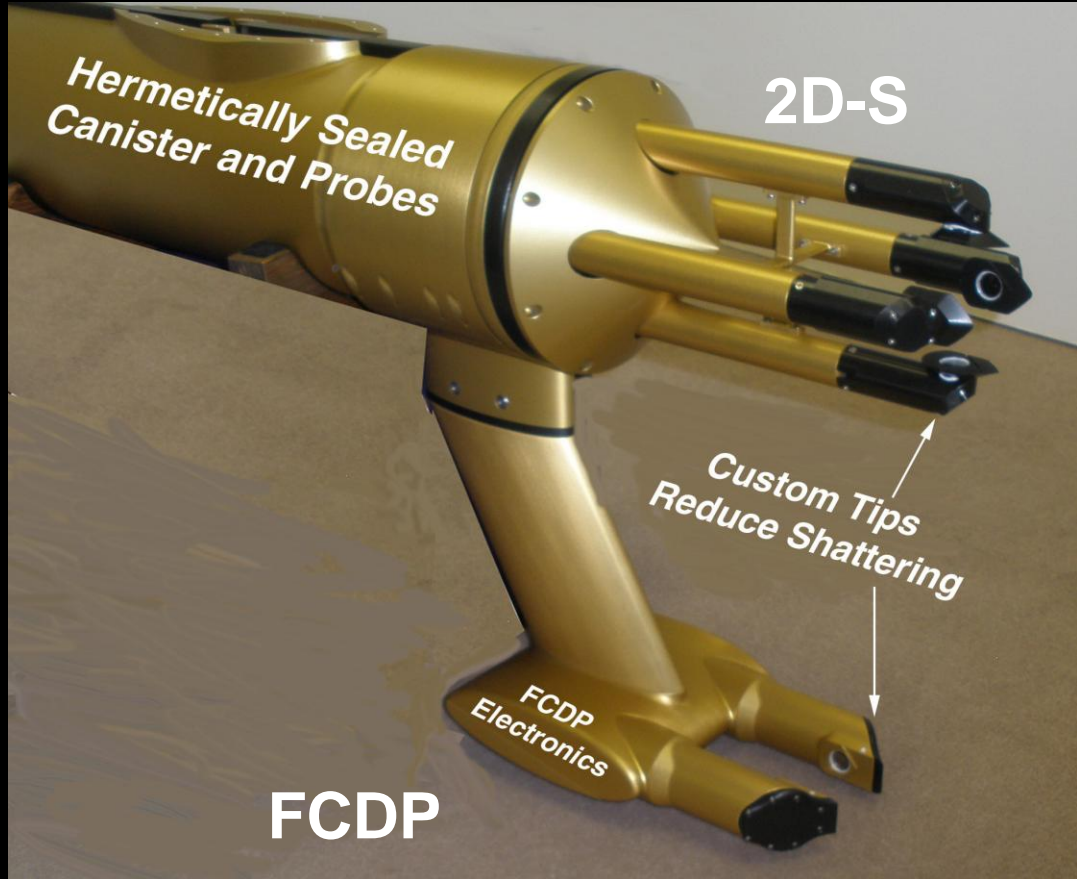
Participation in ICE-T with the SPEC Learjet



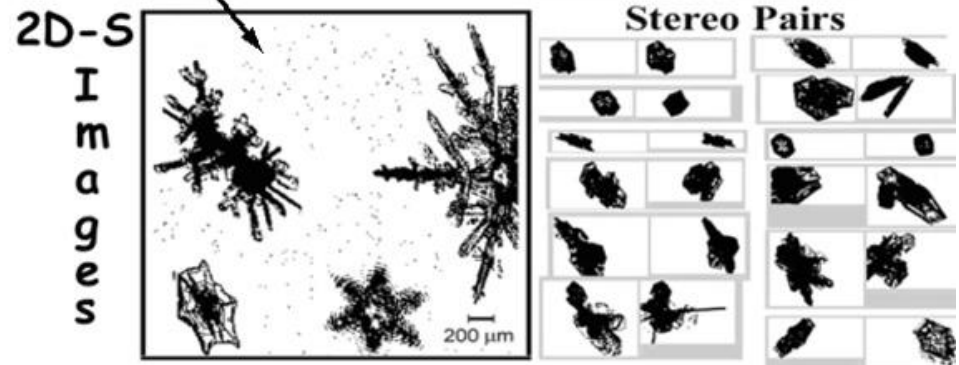
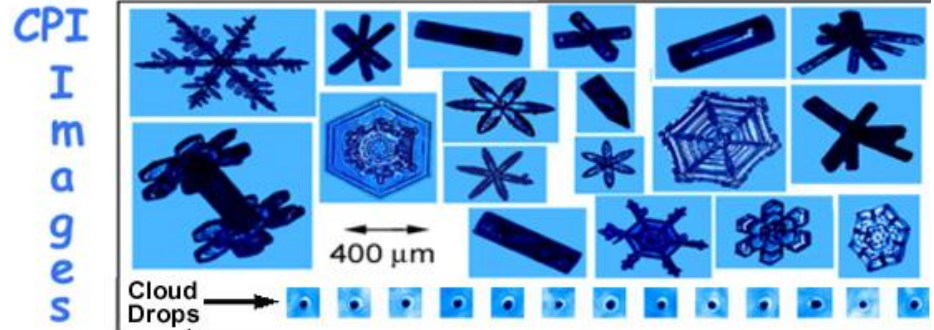
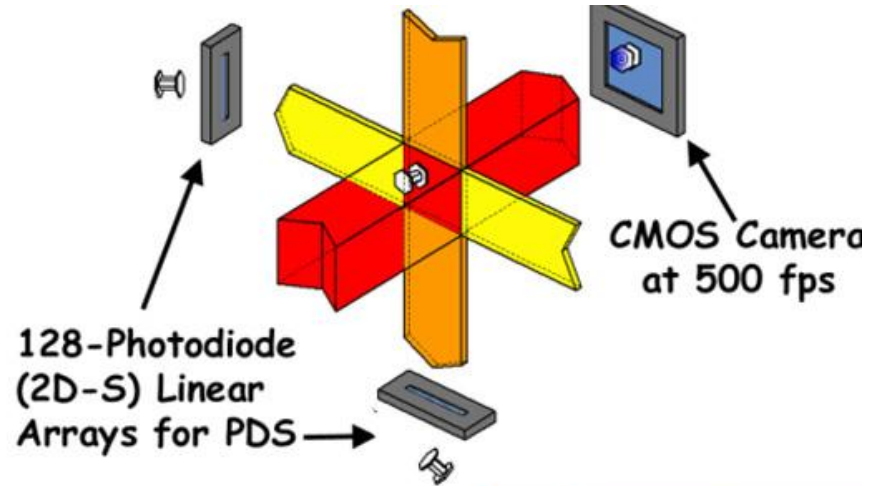
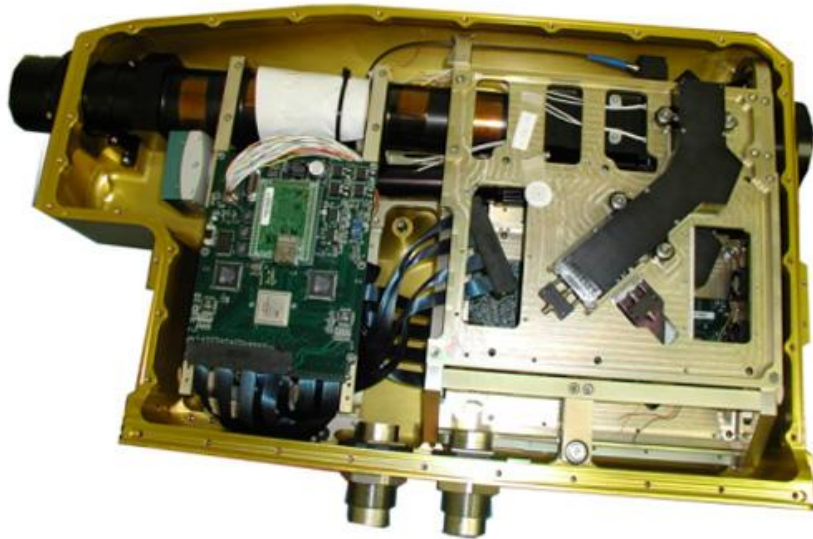
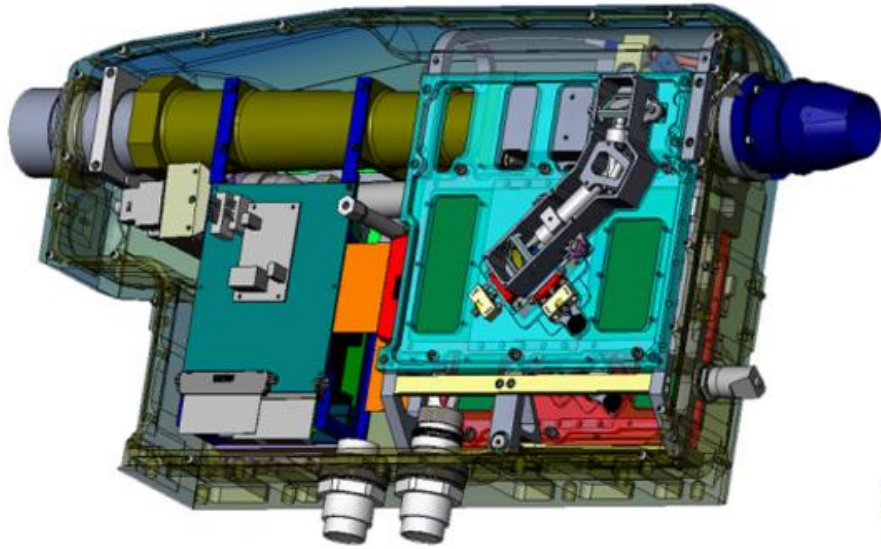
Paul Lawson and Brad Baker



SPEC Probes are all Equipped with Tips Designed to Reduce Shattering



3V-CPI Developed Under NSF and Navy Funding. Combines Best Features of CPI and 2D-S



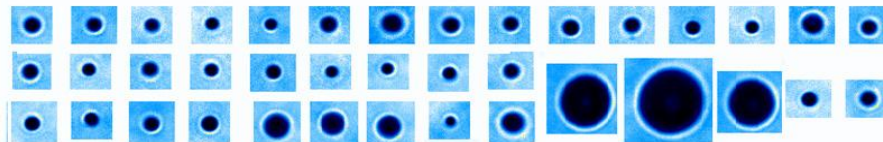
3V-CPI Installed on the NSF/NCAR GV



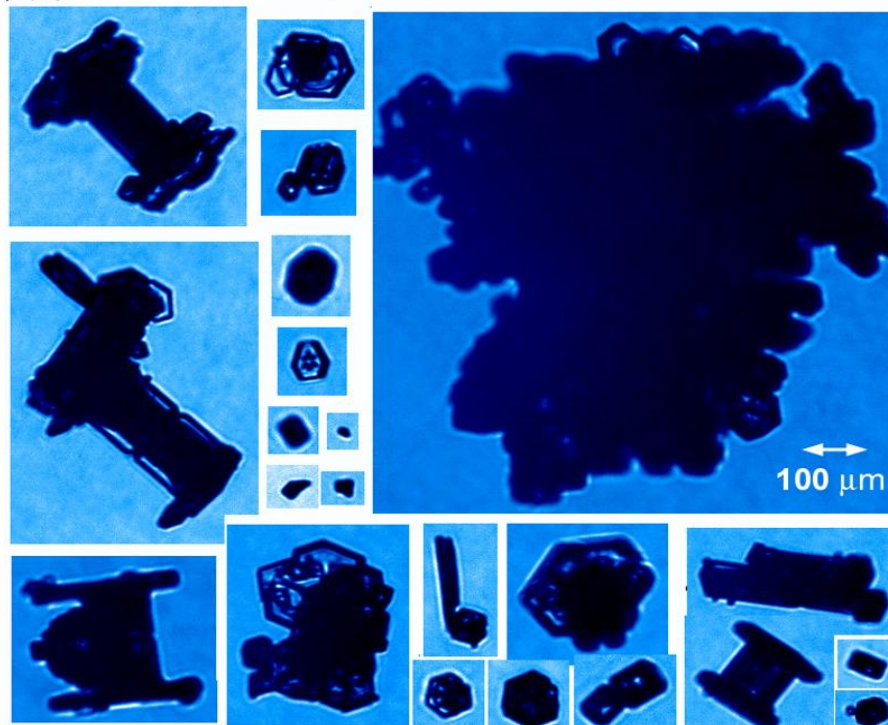
Installed on the
NSCAR Gulfstream V

3V-CPI Images from NCAR GV (8-15-2010) in PREDICT

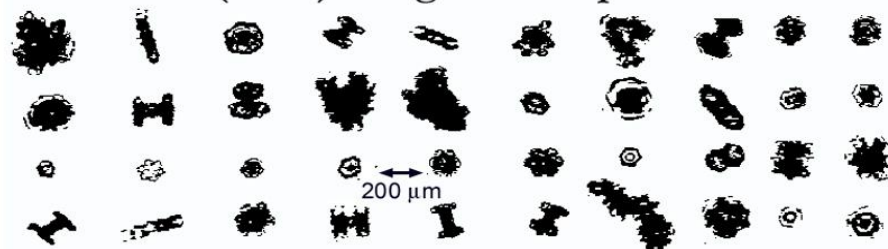
3V-CPI (CPI) Images of Water Drops in Cumulus



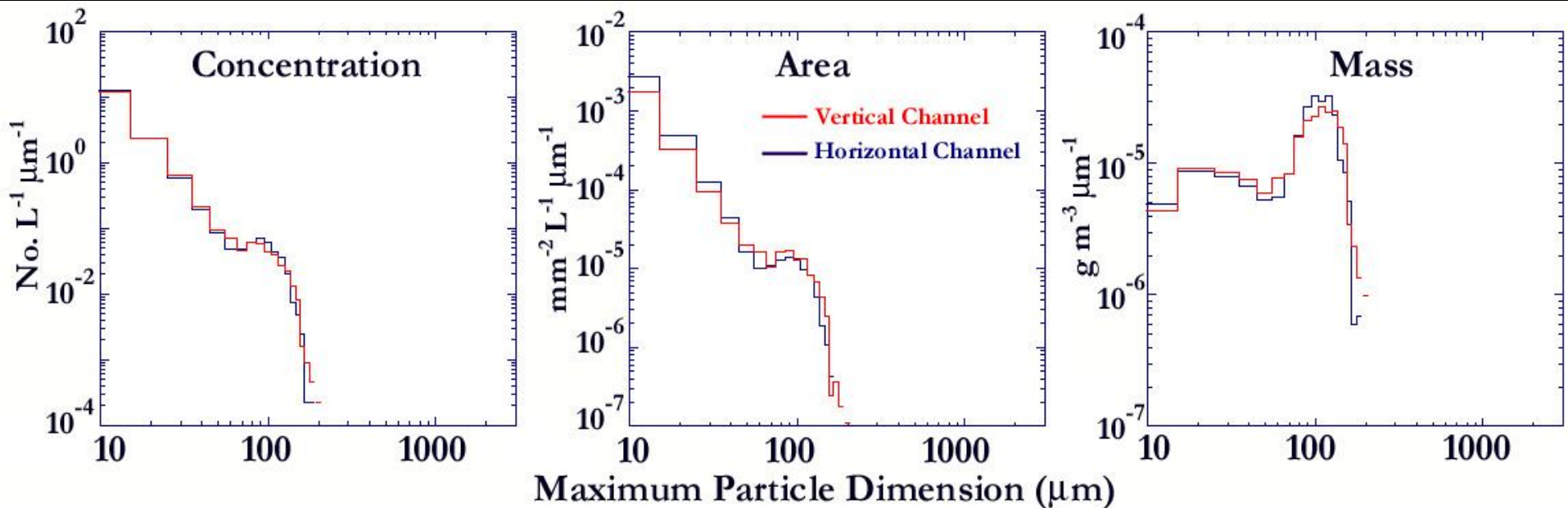
3V-CPI (CPI) Images in Tropical Anvil



3V-CPI (2D-S) Images in Tropical Anvil



Size Distributions from 2D-S Horizontal and Vertical Channels of 3V-CPI Probe Installed on NCAR GV in PREDICT (8-15-2010)



Payload, Performance and Duration

- **Two Pilots, Two Techs and One or Two Observers (Depending on Fuel/Weight Restrictions)**
- **2 to 2.5 Hours Duration, Depending on Flight Profiles.**
- **Ceiling 45,000 ft. Climb 5,000 fpm @ SL. 2,000 fpm up to ~ 30,000 ft**
- **When on Standby can Generally Launch with 20 min Notification.**