

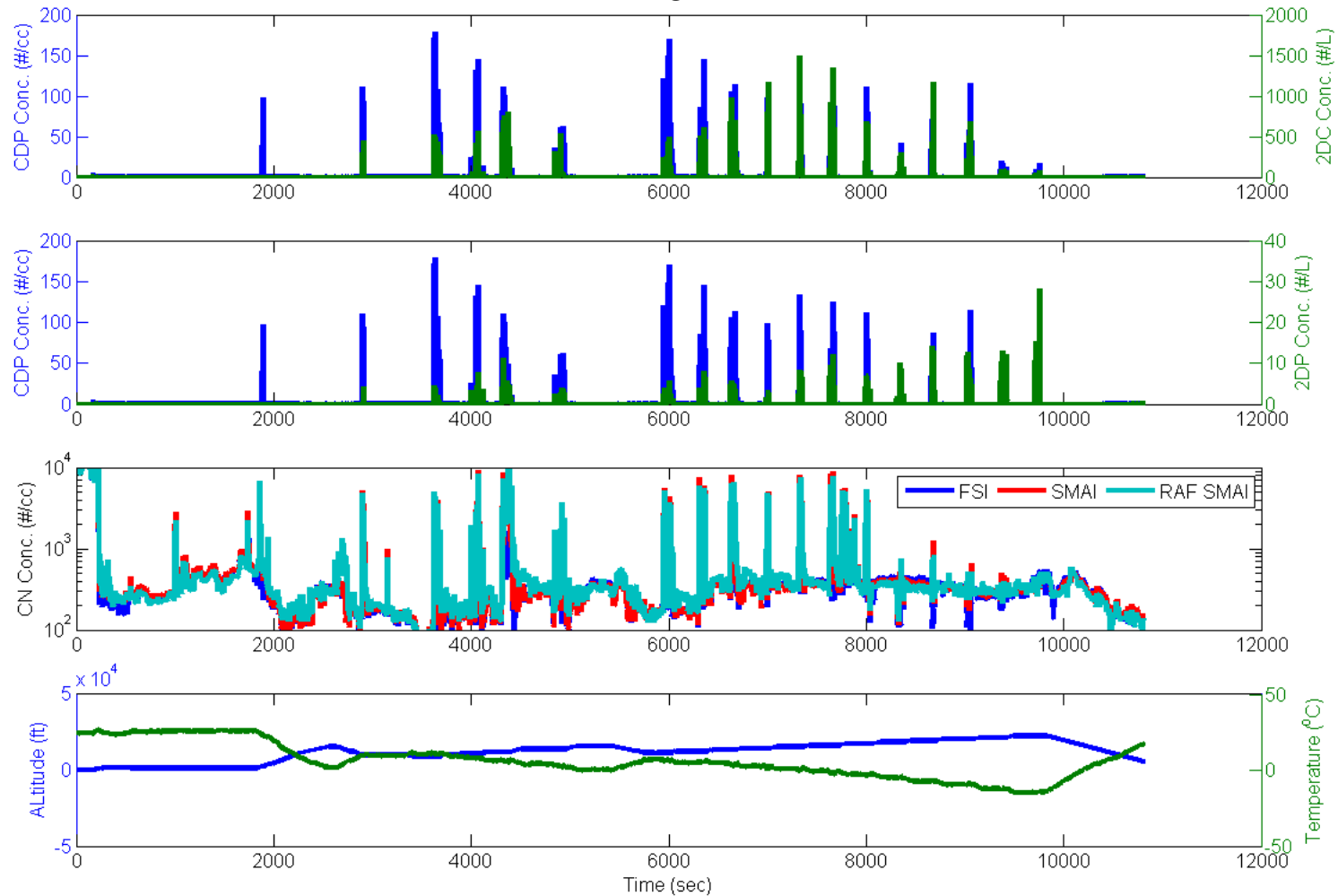
**ICE-T**

Clarkson Mid-Campaign Report



# Inlet Characterization

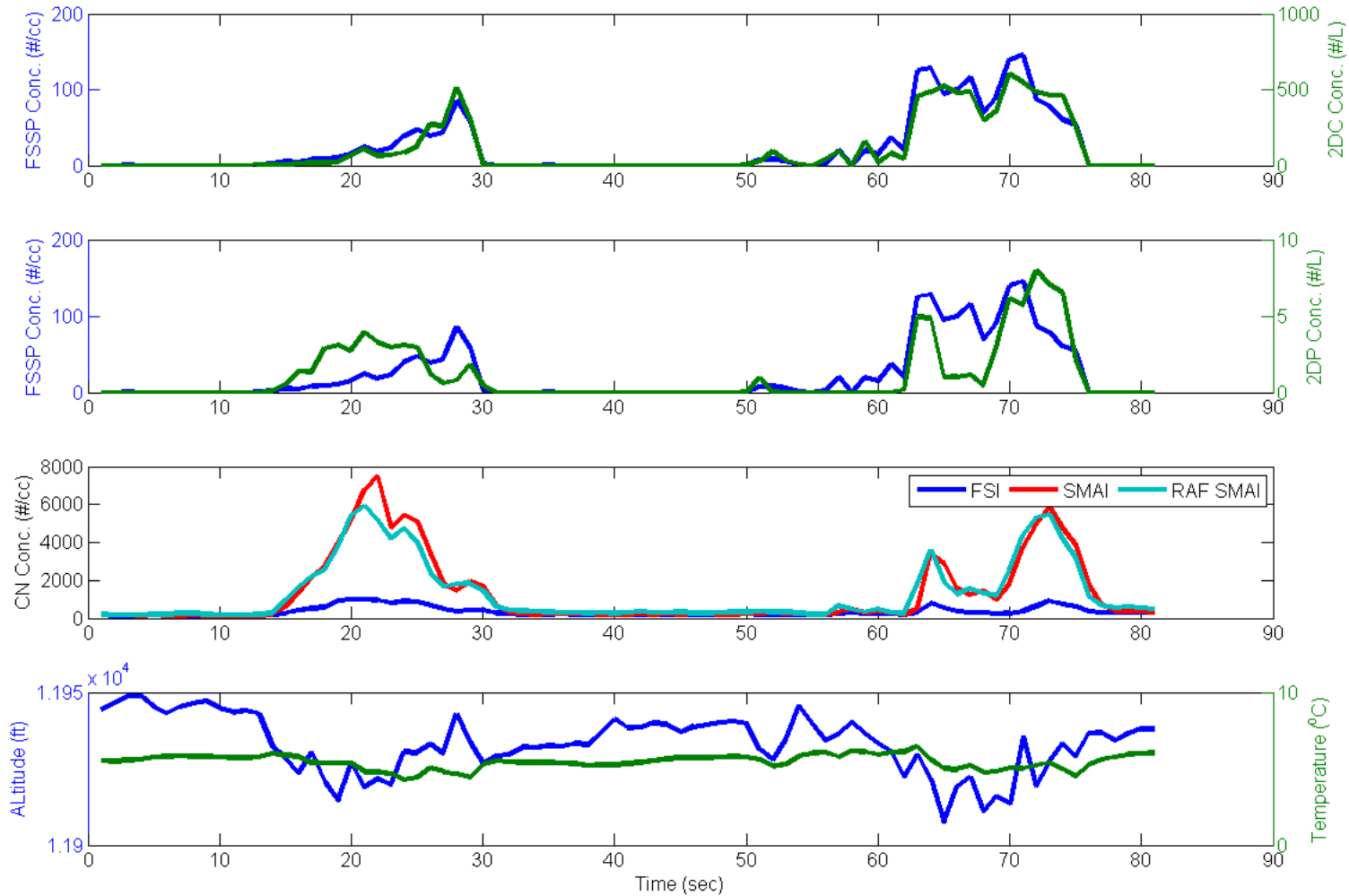
RF 07



- All inlets follow similar trends outside clouds
- Two SMAI inlets have similar behavior in and outside clouds, suggesting location independent performance (regarding shatter effects)

# Inlet Characterization

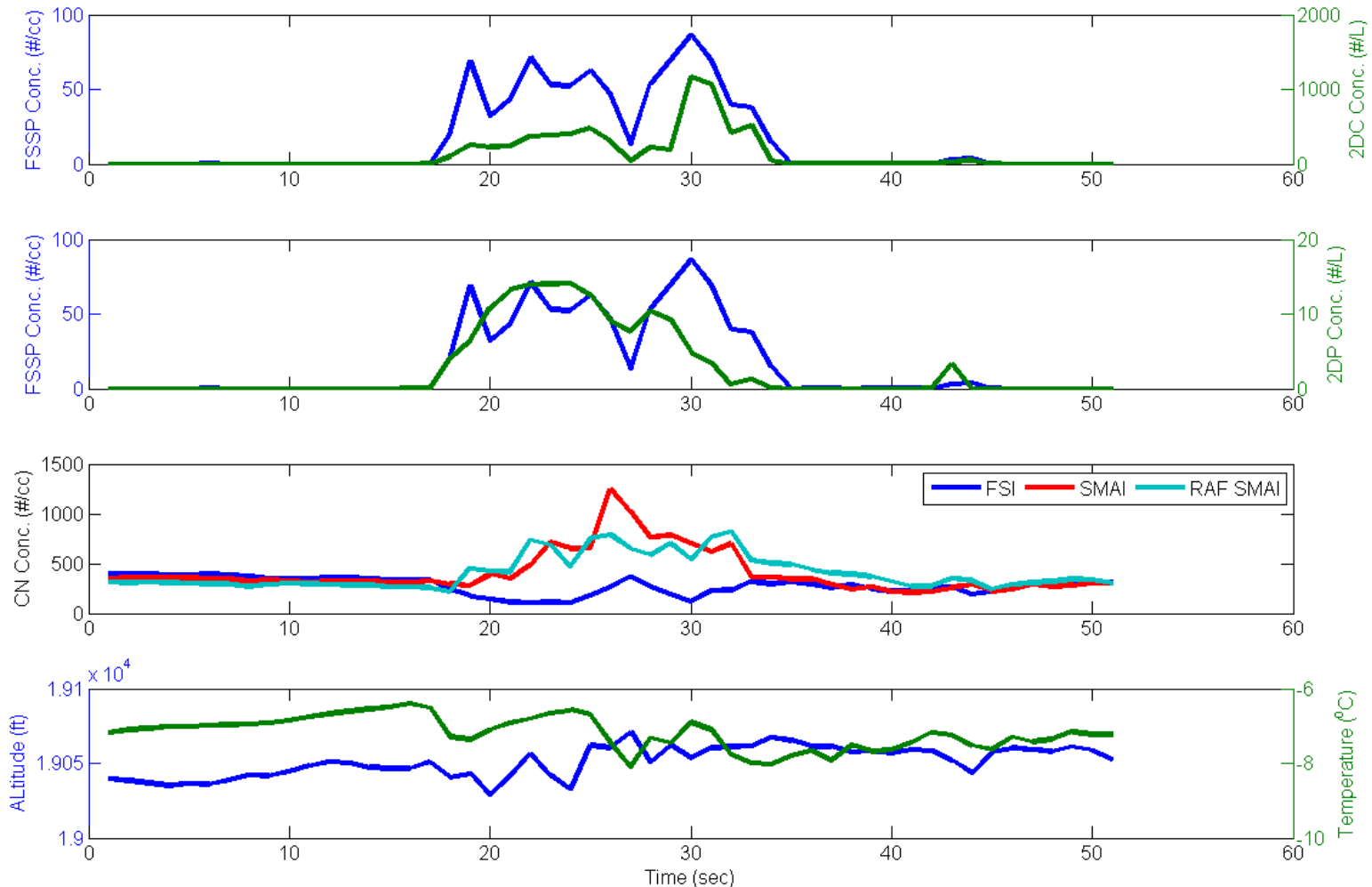
RF 07



- In warm, precipitating clouds all inlets had shatter artifacts

# Inlet Characterization

RF 07

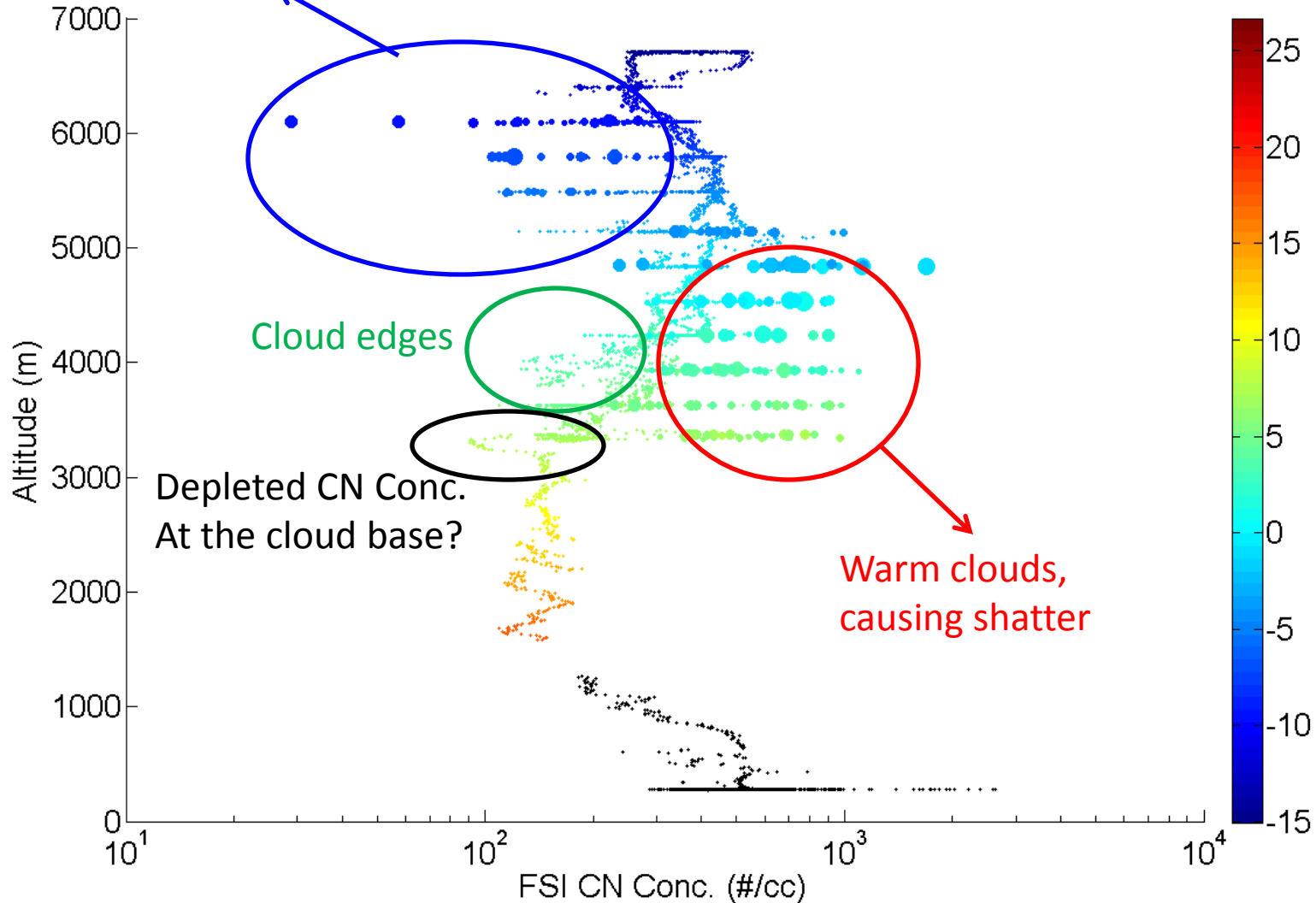


- In presence of ice, the FSI seems to be largely shatter-free
- The performance of inlets regarding shatter in different conditions can be seen in the next slide too

# Inlet Characterization

RF07

17:23 - 18:49



- Data points colored by temperature (° C) and sized by 2DC concentration

- Overall Status for Inlet Studies: Seems we have enough data for inlet characterization

# Science Goals

- Size distribution measurements using the interstitial inlet data undergoing
- More measurements are needed with different combination of DMA and CCN instrument settings
- All instruments are in operational status, UHSAS having some noise issues that are being worked on