

Data Management Processes and Plans for HIPPO

Sigurd W. Christensen and Les A. Hook

Environmental Sciences Division
Oak Ridge National Laboratory
Oak Ridge, Tennessee

Janine Aquino and Steve Williams

Earth Observing Laboratory
National Center for Atmospheric Research
Boulder, CO

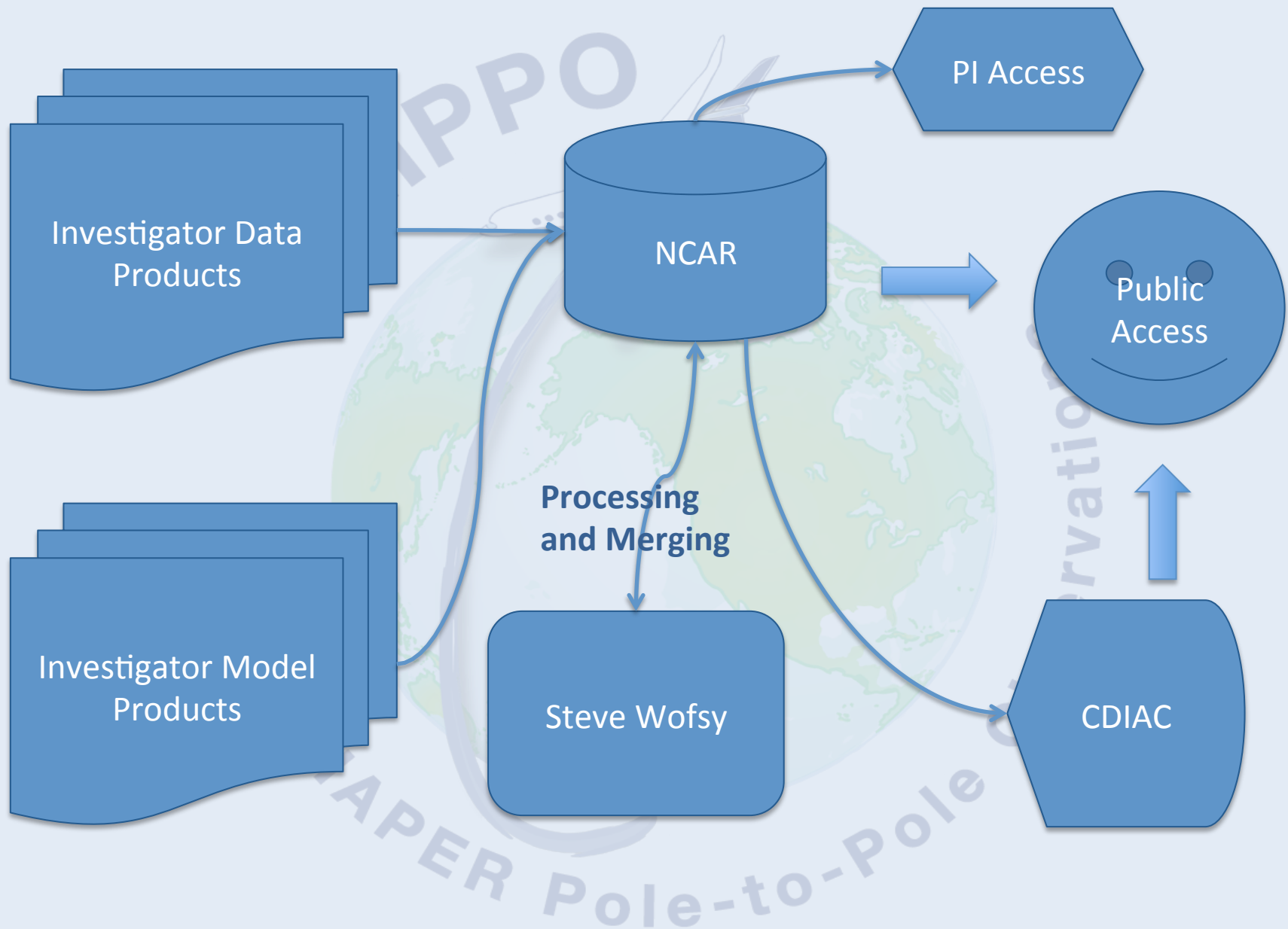
HIPPO Science Team Meeting

March 12-13, 2012

NOAA David Skaggs Research Center
Boulder, CO



HIPPO Data Flow



HIPPO Project Data Flow: Greater NCAR Involvement

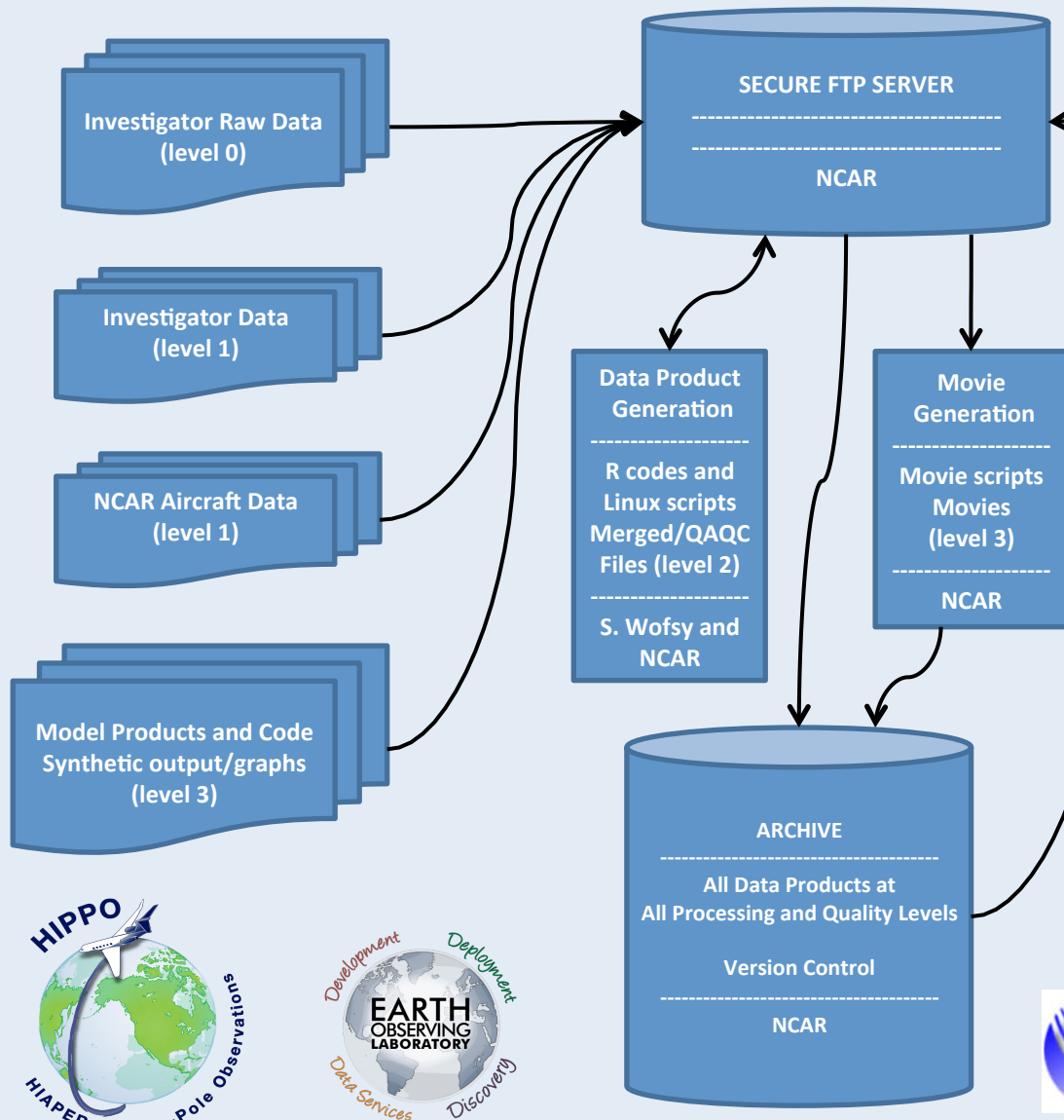
- Overview of Data Flow
- Tag-team Presentation on Parts
- How You Can Help

Steve Has Something to Say...

- Charge to the PIs
- What needs to be provided, when?
- Importance of versioning, explaining differences
- Other points?

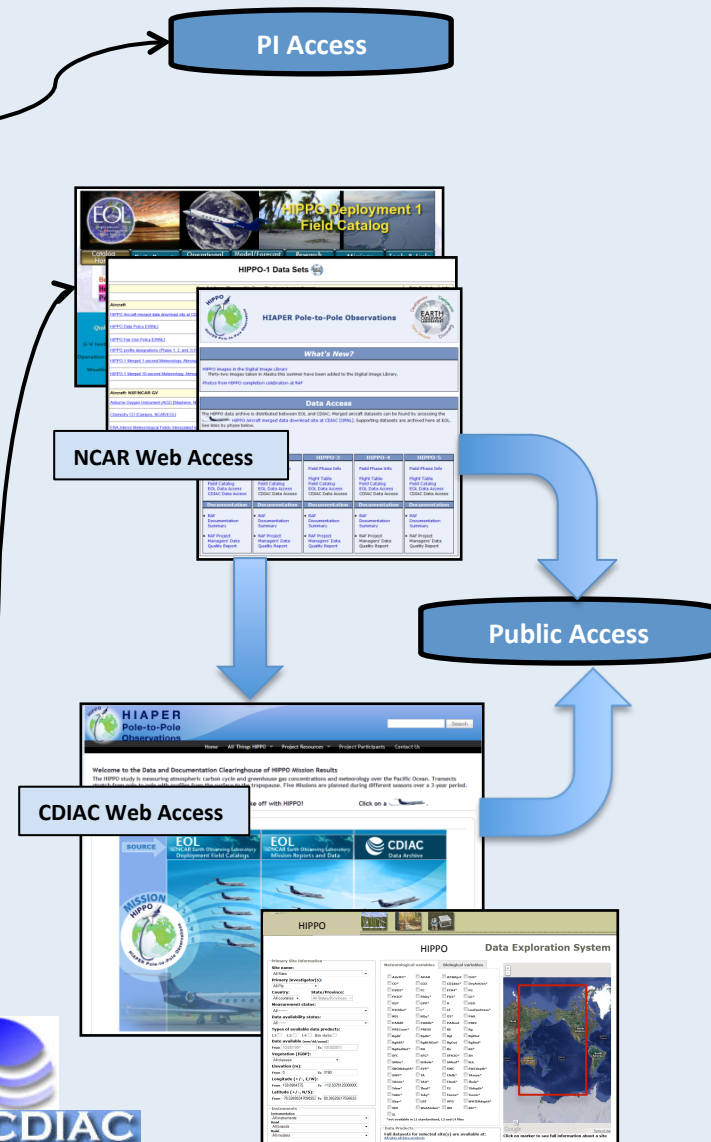
HIPPO Data Flow: Functional Overview

Data Providers



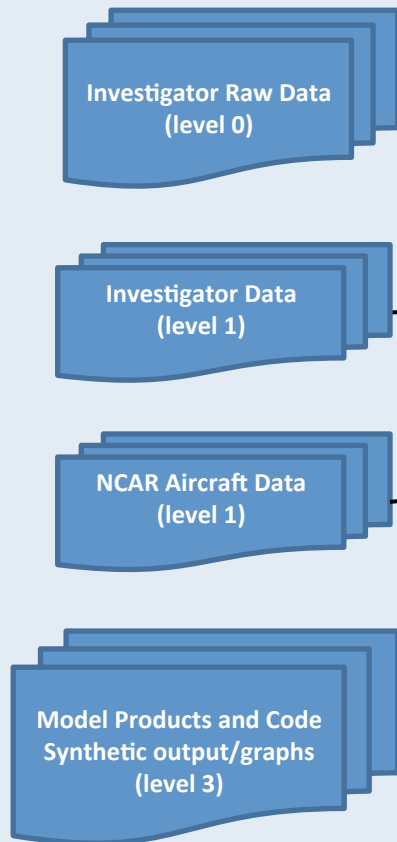
Processing and Archiving

Project and Public Access

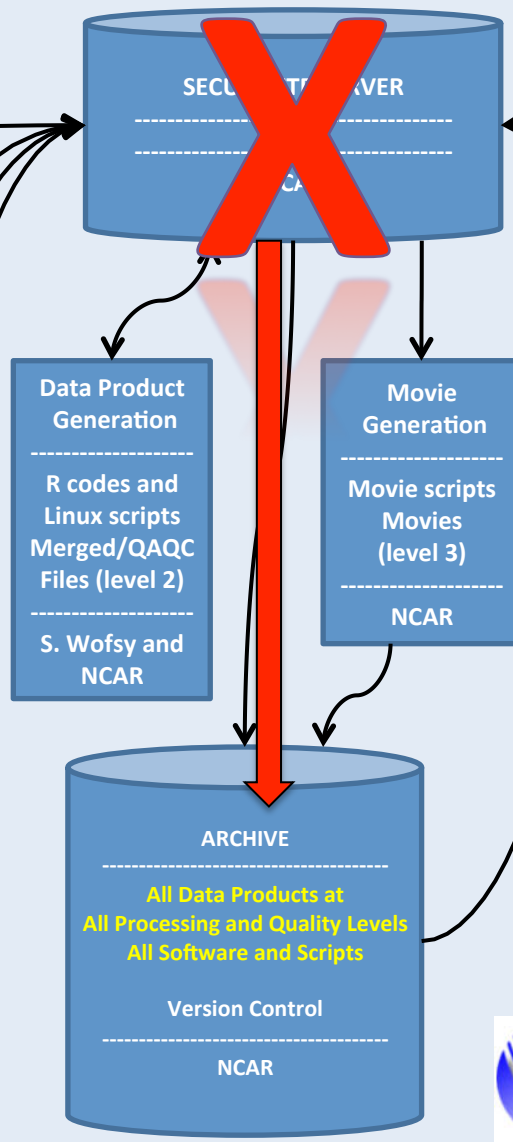


HIPPO Data Flow: Functional Overview

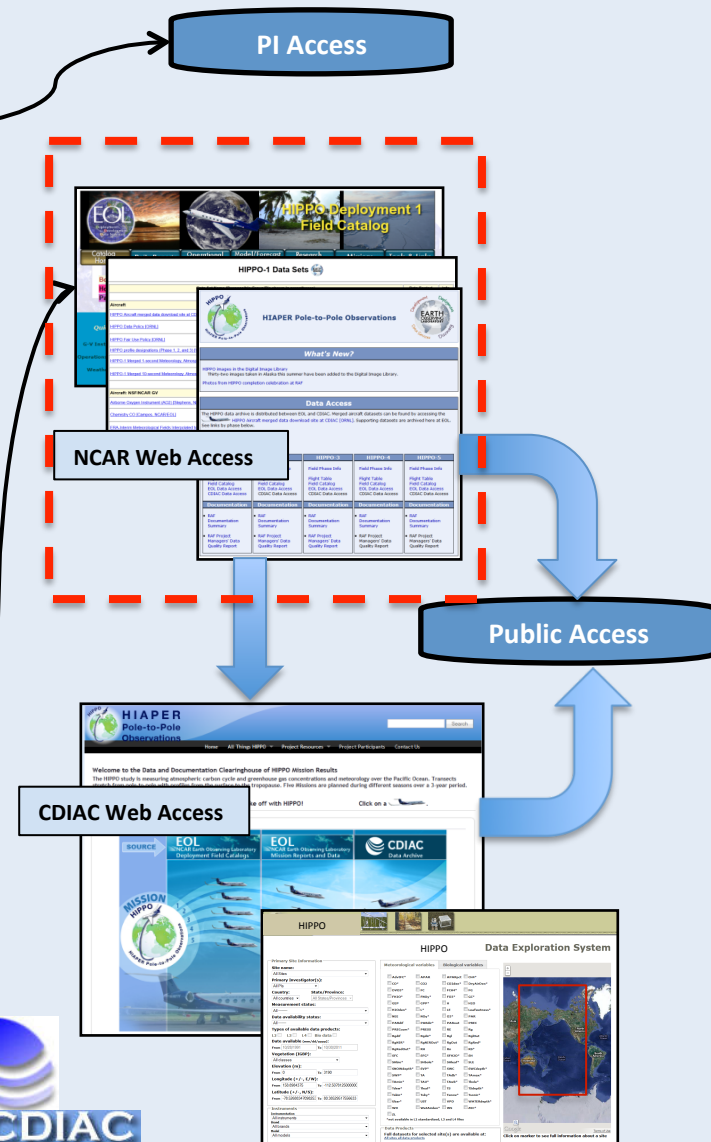
Data Providers



Processing and Archiving



Project and Public Access



HIPPO Project & Data Management Web Site at NCAR/EOL



HIAPER Pole-to-Pole Observations

What's New?

[Quick access to movies](#)

Data Access

The HIPPO data archive is distributed between EOL and CDIAAC. Merged aircraft datasets can be found by accessing the [HIPPO Aircraft merged data download site at CDIAAC \[ORNL\]](#). Supporting datasets are archived here at EOL. See links by phase below.

[Data Policy](#)
[Data Fair Use Policy](#)
[Data Set Documentation Guidelines](#)
[Data Submission Instructions](#)
[NASA Ames format specification](#)

HIPPO-1	HIPPO-2	HIPPO-3	HIPPO-4	HIPPO-5
Field Phase Info Flight Table Field Catalog EOL Data Access CDIAC Data Access	Field Phase Info Flight Table Field Catalog EOL Data Access CDIAC Data Access	Field Phase Info Flight Table Field Catalog EOL Data Access CDIAC Data Access	Field Phase Info Flight Table Field Catalog EOL Data Access CDIAC Data Access	Field Phase Info Flight Table Field Catalog EOL Data Access CDIAC Data Access
Documentation	Documentation	Documentation	Documentation	Documentation
<ul style="list-style-type: none">• RAF Documentation Summary• RAF Project Managers' Data Quality Report	<ul style="list-style-type: none">• RAF Documentation Summary• RAF Project Managers' Data Quality Report	<ul style="list-style-type: none">• RAF Documentation Summary• RAF Project Managers' Data Quality Report	<ul style="list-style-type: none">• RAF Documentation Summary• RAF Project Managers' Data Quality Report	<ul style="list-style-type: none">• RAF Documentation Summary• RAF Project Managers' Data Quality Report

Project Description

The "Collaborative Research: HIAPER Pole-to-Pole Observations (HIPPO) of Carbon Cycle and Greenhouse Gases Study" will measure cross sections of atmospheric concentrations approximately pole-to-pole, from the surface to the tropopause, five times during different seasons over a three year period. A comprehensive suite of atmospheric trace

Documentation

[Checksum Info V1](#)
[Dictionary of Parameters in Merged Data V4](#)
[Instrument Descriptions V3](#)
[Steve Wofsy's Homepage:](#)

- Project Description
- Logistics
- Data Access and **Field Catalog**
- Documentation
- Meetings and Workshops
- Presentations
- Publications
- Education and Outreach
- Related Web Pages
- Participants
- Photos and Movies

www.eol.ucar.edu/projects/hippo

"FIELD" DATA ACCESS



HIPPO Deployment 1 Field Catalog

[Catalog Home](#)[Daily Reports](#)[Operational Products](#)[Model/Forecast Products](#)[Research Products](#)[Missions](#)[Tools & Links](#)

Boulder:	Wed, Mar 7, 4:29 PM	UTC:	Wed, Mar 7, 23:29 Z	Anchorage:	Wed, Mar 7, 2:29 PM
Honolulu:	Wed, Mar 7, 1:29 PM	Pago Pago:	Wed, Mar 7, 12:29 PM	Christchurch:	Thur, Mar 8, 12:29 PM
Papeete:	Wed, Mar 7, 1:29 PM	Easter Island:	Wed, Mar 7, 6:29 PM	San Jose:	Wed, Mar 7, 5:29 PM

Quick Links:

G-V Instrument Status

Operations Plan of the Day

Weather Discussion

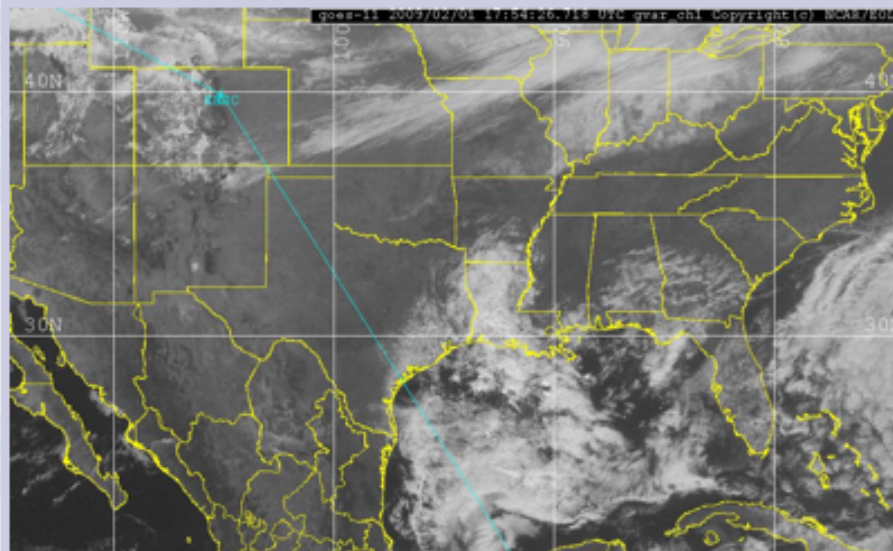


Real-Time HIPPO kml

Waypoints kml

(Download KML first,
right-mouse click

Current Loop



General Information:

Time Zone Conversion chart

Instrument Alert Info

**Teleconference Access
Numbers:**

1-866-740-1260 (US toll free)
PagoPago: 1-303-248-0285 (toll)
New Zealand: 0800450780 (free)
Tahiti: 00-1-303-248-0285 (toll)
Easter Is: 188800201836 (Free)
Costa Rica: 00-1-303-248-0285
(toll)

HIPPO Operations Coordinator

HIPPO Project & Data Management Web Site at NCAR/EOL



HIAPER Pole-to-Pole Observations

What's New?

Quick access to movies 

Data Access

The HIPPO data archive is distributed between EOL and CDIAC. Merged aircraft datasets can be found by accessing the  HIPPO Aircraft merged data download site at CDIAC [ORNL]. Supporting datasets are archived here at EOL. See links by phase below.

Data Policy
Data Fair Use Policy
Data Set Documentation Guidelines
Data Submission Instructions
NASA Ames format specification

HIPPO-1	HIPPO-2	HIPPO-3	HIPPO-4	HIPPO-5
Field Phase Info Flight Table Field Catalog EOL Data Access CDIAC Data Access	Field Phase Info Flight Table Field Catalog EOL Data Access CDIAC Data Access	Field Phase Info Flight Table Field Catalog EOL Data Access CDIAC Data Access	Field Phase Info Flight Table Field Catalog EOL Data Access CDIAC Data Access	Field Phase Info Flight Table Field Catalog EOL Data Access CDIAC Data Access
Documentation	Documentation	Documentation	Documentation	Documentation
<ul style="list-style-type: none">RAF Documentation SummaryRAF Project Managers' Data Quality Report	<ul style="list-style-type: none">RAF Documentation SummaryRAF Project Managers' Data Quality Report	<ul style="list-style-type: none">RAF Documentation SummaryRAF Project Managers' Data Quality Report	<ul style="list-style-type: none">RAF Documentation SummaryRAF Project Managers' Data Quality Report	<ul style="list-style-type: none">RAF Documentation SummaryRAF Project Managers' Data Quality Report

Project Description

The "Collaborative Research: HIAPER Pole-to-Pole Observations (HIPPO) of Carbon Cycle and Greenhouse Gases Study" will measure cross sections of atmospheric concentrations approximately pole-to-pole, from the surface to the tropopause, five times during different seasons over a three year period. A comprehensive suite of atmospheric trace

Documentation

Checksum Info V1
Dictionary of Parameters in Merged Data V4
Instrument Descriptions V3
Steve Wofsy's Homepage:

- Project Description
- Logistics
- Data Access and Field Catalog
- Documentation
- Meetings and Workshops
- Presentations
- Publications
- Education and Outreach
- Related Web Pages
- Participants
- Photos and **Movies**

www.eol.ucar.edu/projects/hippo

Movies!!!



HIAPER Pole-to-Pole Observations



What's New?

This page contains movies created from images taken by the forward-looking digital camera aboard the G-V during HIPPO. Movies for HIPPO-1 are final and contain selected data parameters along the right. Movies for HIPPO-2 thru 5 are preliminary and do not contain data. They will be regenerated as final data become available.

Movie Access

- Click the image to watch the research-quality movie.
- Click the icon to watch the educational version of the video

Note: Not all flights have educational videos available.

HIPPO-1

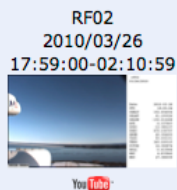
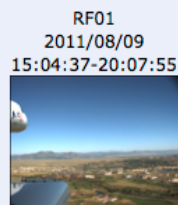
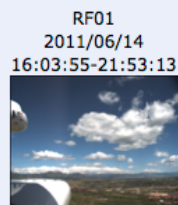
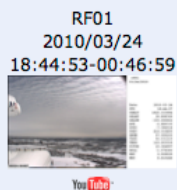
HIPPO-2

HIPPO-3

HIPPO-4

HIPPO-5

No movie for RF01



RF03

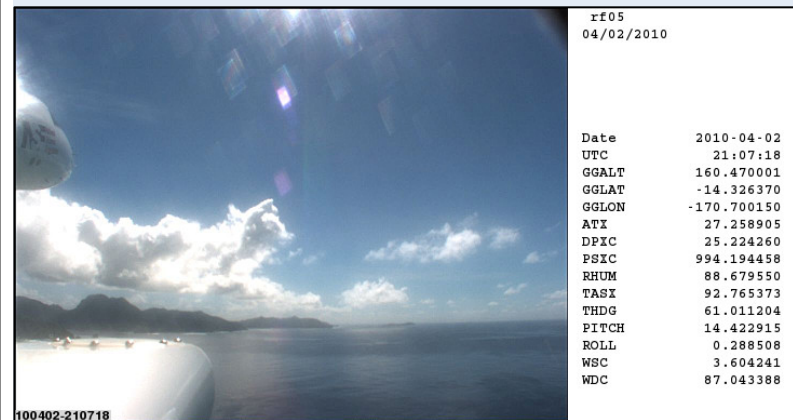
RF03

RF03

RF03

RF03

Movies at 15fps with navigation and state data streaming along the right edge. Click on the icon to watch the educational versions of the video (not available for all videos).



HIPPO Project & Data Management Web Site at NCAR/EOL



HIAPER Pole-to-Pole Observations

What's New?

Quick access to movies

Data Access

The HIPPO data archive is distributed between EOL and CDIAC. Merged aircraft datasets can be found by accessing the  HIPPO Aircraft merged data download site at CDIAC [ORNL]. Supporting datasets are archived here at EOL. See links by phase below.

Data Policy
Data Fair Use Policy
Data Set Documentation Guidelines
Data Submission Instructions
NASA Ames format specification

HIPPO-1	HIPPO-2	HIPPO-3	HIPPO-4	HIPPO-5
Field Phase Info Flight Table Field Catalog EOL Data Access CDIAC Data Access	Field Phase Info Flight Table Field Catalog EOL Data Access CDIAC Data Access	Field Phase Info Flight Table Field Catalog EOL Data Access CDIAC Data Access	Field Phase Info Flight Table Field Catalog EOL Data Access CDIAC Data Access	Field Phase Info Flight Table Field Catalog EOL Data Access CDIAC Data Access
Documentation	Documentation	Documentation	Documentation	Documentation
• RAF Documentation Summary • RAF Project Managers' Data Quality Report	• RAF Documentation Summary • RAF Project Managers' Data Quality Report	• RAF Documentation Summary • RAF Project Managers' Data Quality Report	• RAF Documentation Summary • RAF Project Managers' Data Quality Report	• RAF Documentation Summary • RAF Project Managers' Data Quality Report

Project Description

The "Collaborative Research: HIAPER Pole-to-Pole Observations (HIPPO) of Carbon Cycle and Greenhouse Gases Study" will measure cross sections of atmospheric concentrations approximately pole-to-pole, from the surface to the tropopause, five times during different seasons over a three year period. A comprehensive suite of atmospheric trace

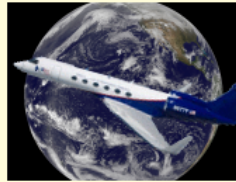
Documentation

Checksum Info V1
Dictionary of Parameters in Merged Data V4
Instrument Descriptions V3
Steve Wofsy's Homepage:

- Project Description
- Logistics
- **Data Access** and Field Catalog
- Documentation
- Meetings and Workshops
- Presentations
- Publications
- Education and Outreach
- Related Web Pages
- Participants
- Photos and Movies

www.eol.ucar.edu/projects/hippo

HIPPO Project & Data Management Web Site at NCAR/EOL



DATA BY CATEGORY

- **Aircraft**

to HIPPO-1

comments & questions to
c@ucar.edu

What supplemental
data do you need?

• **Satellite:**

*geosynchronous, polar
orbiting, etc...*









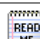
• **Model:** *weather,
chemistry, etc...*

• **Soundings:** *COSMIC,
GTS, etc...*

• **Ocean data:** *SST, ships*

janine@ucar.edu

HIPPO-1 Data Sets

Data Set Name (Responsible Group/PIs shown in parentheses)	Date Posted	Info
Aircraft		
HIPPO Aircraft merged data download site at CDIAC [ORNL]	2011-02-25	
HIPPO Data Policy [ORNL]	2011-11-10	
HIPPO Fair Use Policy [ORNL]	2011-11-10	
HIPPO profile designations (Phase 1, 2, and 3) [Wofsy/Harvard]	2011-04-20	
HIPPO-1 Merged 1-second Meteorology, Atmospheric Chemistry, and Aerosol Data [Wofsy/Harvard]	Updated 2011-11-18	
HIPPO-1 Merged 10-second Meteorology, Atmospheric Chemistry, and Aerosol Data [Wofsy/Harvard]	Updated 2011-11-18	
Aircraft: NSF/NCAR GV		
Airborne Oxygen Instrument (AO2) [Stephens, NCAR/EOL]	2011-03-11	
Chemistry CO [Campos, NCAR/EOL]	Updated 2011-10-06	
ERA-Interim Meteorological Fields Interpolated to HIPPO-1 Flight Tracks - NASA AMES format [Ray, E. NOAA/ESRL]	2011-10-03	
Forward-Looking Digital Camera Imagery [NCAR/EOL/RAF]	2010-02-04	
Forward-Looking Digital Camera Movies - Preliminary [NCAR/EOL/RAF]	2010-07-20	
Forward-Looking Digital Camera Movies with data - Final [NCAR/EOL/RAF]	2011-03-21	
HAIS Advanced Whole Air Sampler (AWAS) [Atlas, U. Miami]	2011-03-11	

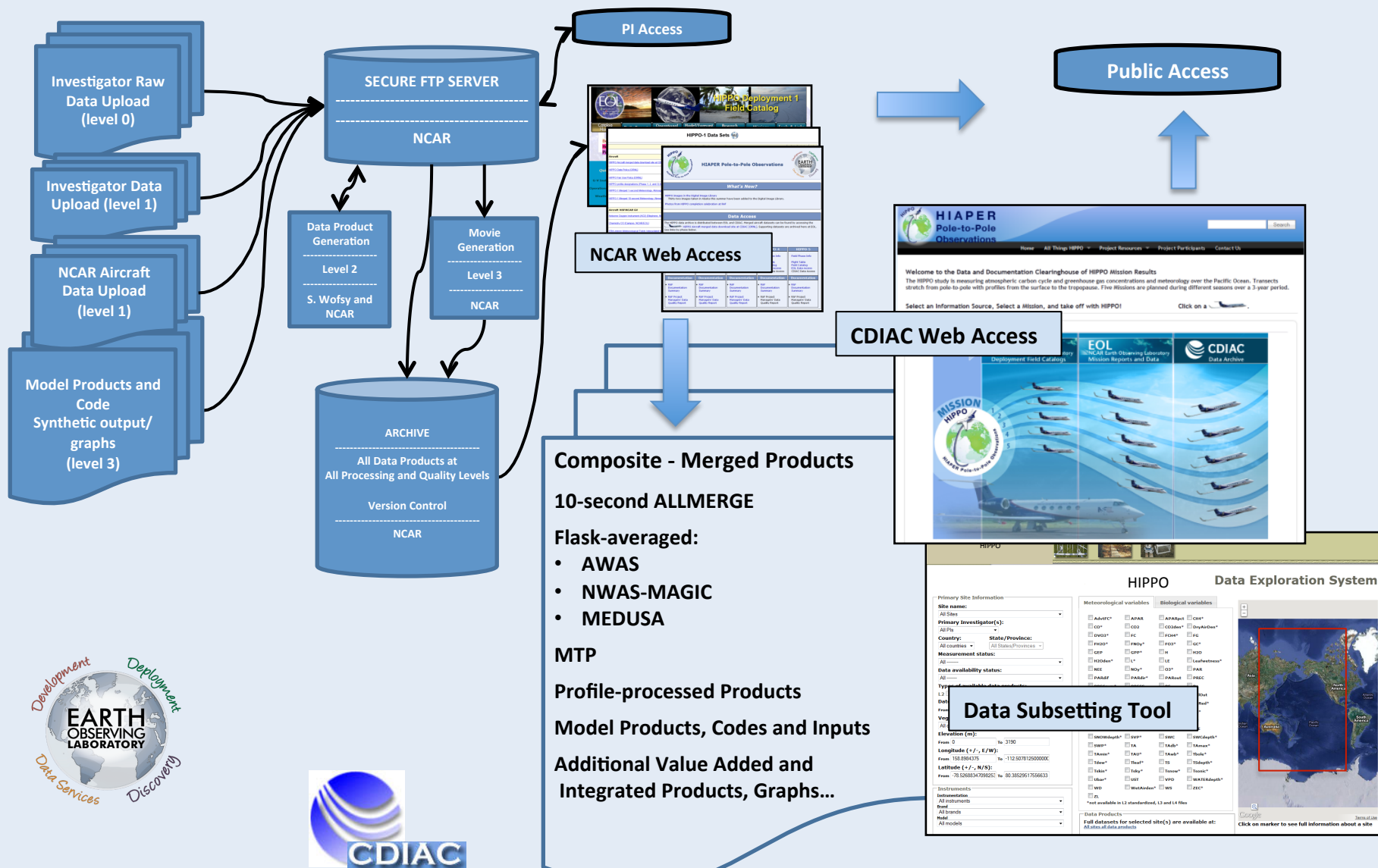
http://data.eol.ucar.edu/master_list/?project=HIPPO-1

HIPPO Data Flow: CDIAC Expanded Functions

Data Providers

Processing and Archiving



Project and Public Access



CDIAC Serves the Main Products to the Public

- This is CDIAC's traditional role
- Most Level 2 (10-s and flask merges) and Level 3 products
 - Mirrored from NCAR, using NCAR versions
- CDIAC develops
 - Supplemental documentation
 - Includes a Revision History
 - Permanent data set citation with DOI
 - Searchable/shared metadata record reaches wider audience
- Anonymous access to data
 - Metrics can be developed
- Registration option could offer notification about updates
 - Could also allow more detailed use metrics to be developed
- Data subsetting capability is planned

HIPPO Data Subsetting Tool: Spatial, Temporal, Parameter, Mission and Flight Subsetting. Flight graphics. More?



AmeriFlux Site and Data Exploration System

Primary Site Information

Site name:

Primary Investigator(s):

Country: **State/Province:**

Measurement status:

Data availability status:

Types of available data products:
L2 ☐ L3 ☐ L4 ☐ Bio data ☐

Date available (mm/dd/yyyy):
From To

Vegetation (IGBP):

Elevation (m):
From To

Longitude (+/-, E/W):
From To

Latitude (+/-, N/S):
From To

Instruments

Instrumentation

Brand

Model

Meteorological variables

<input type="checkbox"/> AdvtFC*	<input type="checkbox"/> APAR
<input type="checkbox"/> CO*	<input type="checkbox"/> CO2
<input type="checkbox"/> DVO3*	<input type="checkbox"/> FC
<input type="checkbox"/> FH2O*	<input type="checkbox"/> FNOy*
<input type="checkbox"/> GEP	<input type="checkbox"/> GPP*
<input type="checkbox"/> H2Oden*	<input type="checkbox"/> L*
<input type="checkbox"/> NEE	<input type="checkbox"/> NOy*
<input type="checkbox"/> PARdif	<input type="checkbox"/> PARdir*
<input type="checkbox"/> PRECcum*	<input type="checkbox"/> PRESS
<input type="checkbox"/> Rgdif	<input type="checkbox"/> Rgdir*
<input type="checkbox"/> RgNIR*	<input type="checkbox"/> RgNIROut*
<input type="checkbox"/> RgRedOut*	<input type="checkbox"/> RH
<input type="checkbox"/> SFC	<input type="checkbox"/> SFG*
<input type="checkbox"/> SHbio*	<input type="checkbox"/> SHbole*
<input type="checkbox"/> SNOWdepth*	<input type="checkbox"/> SVP*
<input type="checkbox"/> SWP*	<input type="checkbox"/> TA
<input type="checkbox"/> TAmin*	<input type="checkbox"/> TAU*
<input type="checkbox"/> Tdew*	<input type="checkbox"/> Tleaf*
<input type="checkbox"/> Tskin*	<input type="checkbox"/> Tsky*
<input type="checkbox"/> Ubar*	<input type="checkbox"/> UST
<input type="checkbox"/> WD	<input type="checkbox"/> WetAirden*
<input type="checkbox"/> ZL	<input type="checkbox"/> WS

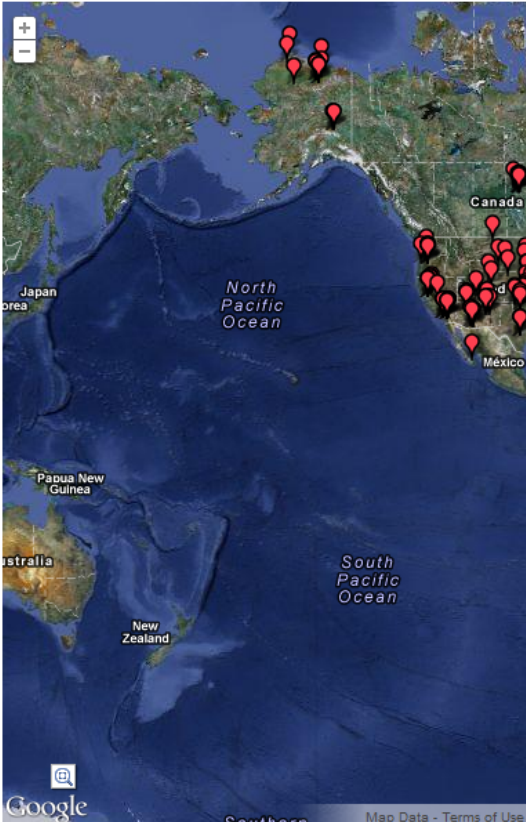
*not available in L2 standardized, L3 and L4 files

Biological variables

<input type="checkbox"/> APARpct	<input type="checkbox"/> CH4*
<input type="checkbox"/> CO2den*	<input type="checkbox"/> DryAirDen*
<input type="checkbox"/> FCH4*	<input type="checkbox"/> FG
<input type="checkbox"/> FO3*	<input type="checkbox"/> GC*
<input type="checkbox"/> H	<input type="checkbox"/> H2O
<input type="checkbox"/> LE	<input type="checkbox"/> Leafwetness*
<input type="checkbox"/> O3*	<input type="checkbox"/> PAR
<input type="checkbox"/> PARout	<input type="checkbox"/> PREC
<input type="checkbox"/> RE	<input type="checkbox"/> Rg
<input type="checkbox"/> Rgl	<input type="checkbox"/> RglOut
<input type="checkbox"/> RgOut	<input type="checkbox"/> RgRed*
<input type="checkbox"/> Rn	<input type="checkbox"/> RS*
<input type="checkbox"/> SFH2O*	<input type="checkbox"/> SH
<input type="checkbox"/> SHleaf*	<input type="checkbox"/> SLE
<input type="checkbox"/> SWC	<input type="checkbox"/> SWCdepth*
<input type="checkbox"/> TAdb*	<input type="checkbox"/> TAmix*
<input type="checkbox"/> TAwb*	<input type="checkbox"/> Tbole*
<input type="checkbox"/> TS	<input type="checkbox"/> TSdepth*
<input type="checkbox"/> Tsnow*	<input type="checkbox"/> Tsonic*
<input type="checkbox"/> VPD	<input type="checkbox"/> WATERdepth*
<input type="checkbox"/> ZEC*	

Data Products

Full datasets for selected site(s) are available at:
[All sites all data products](#)



Click on marker to see full information about a site

Level 3 Products Evolving

- Profiles?
- MTP product(s)?
- Link to NCAR's final research movies with data
- Model products and code/inputs
 - Careful versioning will be critical
 - Content management system(s) could help
 - We'll provide packages, not execution
- Other value-added and integrated products
 - Graphs
 - What else?

How You Can Help?

- Give NCAR good information about what has changed
- Be available to CDIAC for questions about variables, methods, etc.
- Use data set citations in papers
 - And, add data set citations to your resume
- Modelers consider content management/revision control systems to keep code, input, and output aligned

Summary of Data Management for HIPPO

- Pls send data, information to NCAR
 - NCAR archives
- Steve Wofsy/NCAR generate merges
- NCAR provides all data to investigators via logins until finalized
- NCAR provides all data to public via the EOL data archive
- CDIAC provides main products to public
 - Develops documentation
- Listserve will let you know about changes