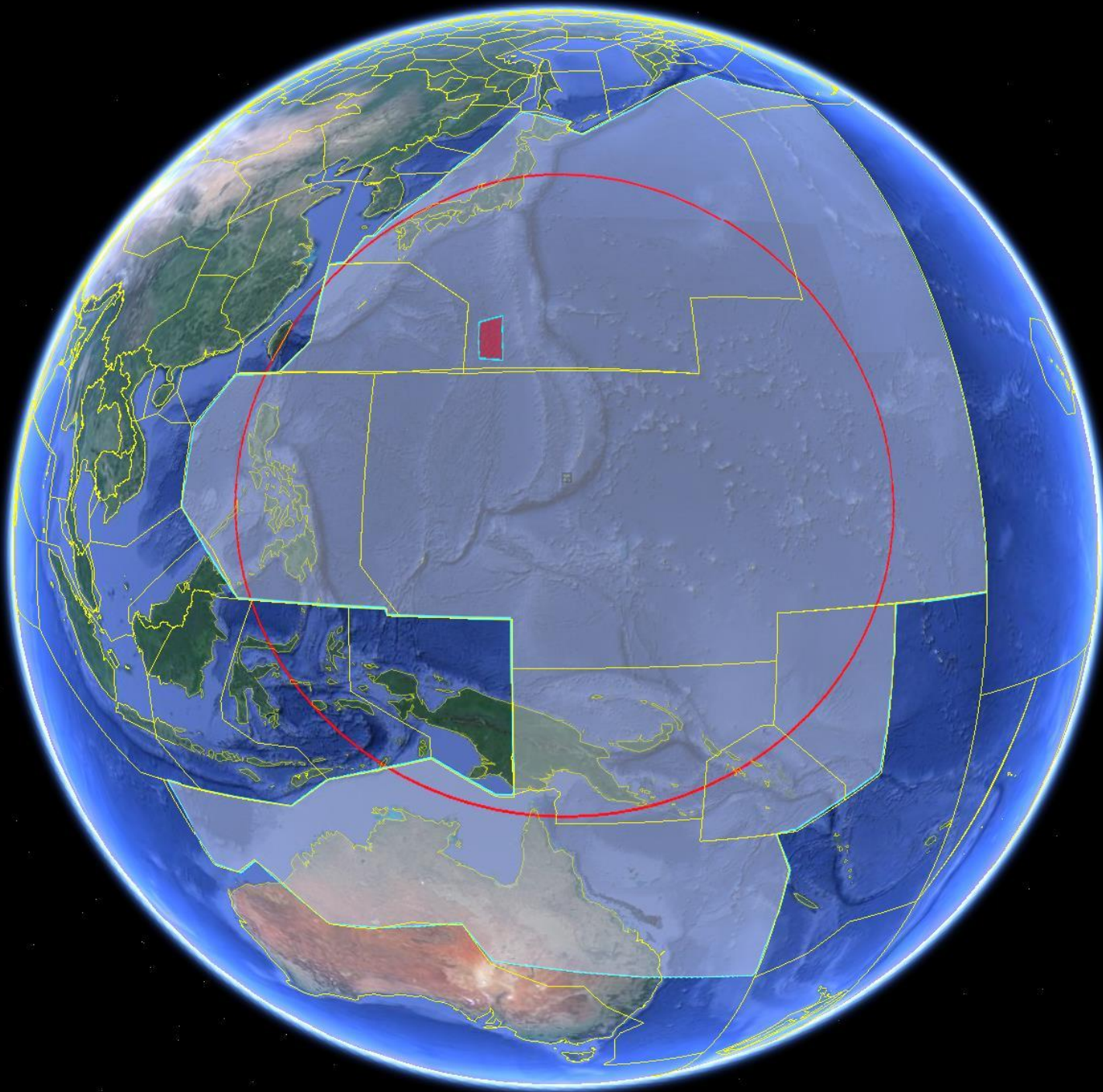
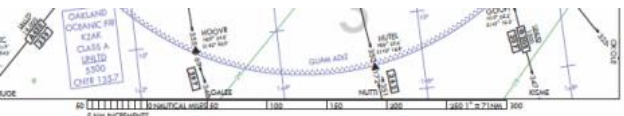


CONTRAST GV Flight Ops



10-22-2013

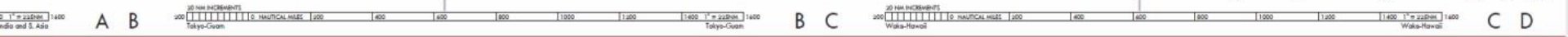
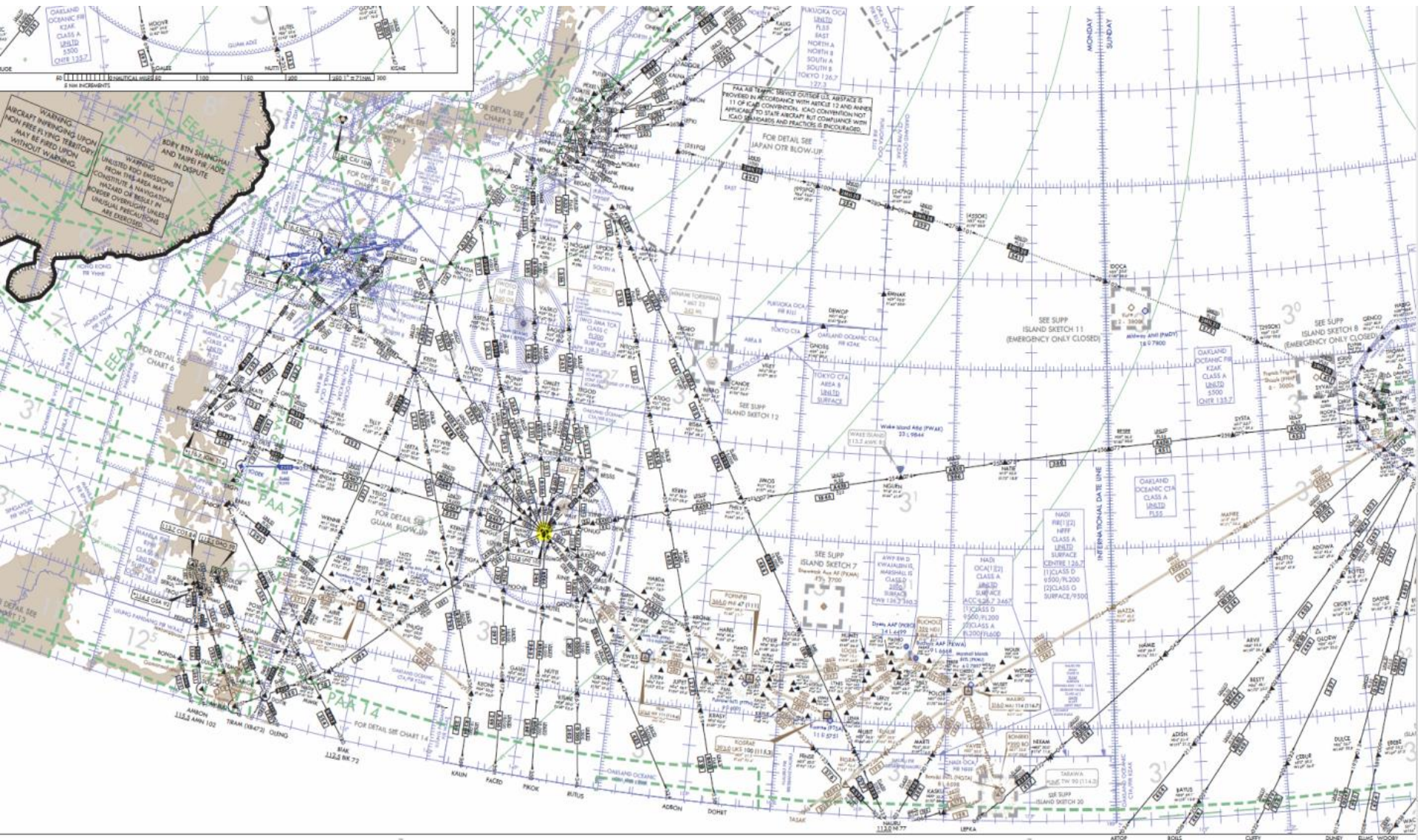




WARNING: AIRCRAFT INFRINGING UPON NON-FREE FLYING TERRITORY MAY BE FIRED UPON WITHOUT WARNING.

WARNING: UNLISTED VEC EMISSIONS FROM THIS AREA MAY INCREASE OR RESULT IN UNUSUAL PRECAUTIONS BE EXERCISED.

BOEY 8TH SHANGHAI AND YAPPEI FIR AIDE IN DISPUTE



A B

B C

C D

Airspace and Traffic

- Off limits:
 - Malaysia
 - Indonesia
 - Military airspace SW of Guam – on NOTAM
 - Military airspace in Fukuoka FIR
- Traffic: transiting through RVSM FL290-FL410 subject to ATC clearance and related delays

Flight Duration and Altitude

- With 2 wing stores GV is expected to reach FL410 from take-off
- Range: 1,500 nmi radius from base; will be fine tuned in first flights based on:
 - Air temperature
 - Drag from payload
 - Flight profiles
- Expect 2-3 vertical profiles if max range is desired, more if range is reduced

Deployment schedule for CONTRAST, Jan-Feb 2014

Sunday	Monday	Tuesday	Wednesday	Thursday	Friday	Saturday
			1/1	1/2 Weigh GV Safety brief FRR	1/3 TF01	1/4
1/5 Down	1/6	1/7 TF02	1/8	1/9 TF03	1/10	1/11 RF01 KBJC-PHKO
1/12 Down	1/13 RF02 PHKO-PGUM	1/14 Arrive PGUM Day lost	1/15	1/16 RF03	1/17	1/18 RF04
1/19 Down	1/20	1/21	1/22 RF05	1/23	1/24 RF06	1/25
1/26 Down	1/27	1/28 RF07	1/29	1/30 RF08	1/31	2/1 RF09
2/2 Down	2/3	2/4 RF10	2/5	2/6 RF11	2/7 Down	2/8
2/9	2/10	2/11 RF12	2/12	2/13 RF13	2/14 Down	2/15
2/16	2/17 RF14	2/18	2/19	2/20 Down	2/21 RF15	2/22
2/23	2/24	2/25 RF16	2/26 Down	2/27	2/28 End flight ops Pre-pack	3/1 Pack
3/2 PGUM-PHKO PHKO-KBJC Day gained	3/3	3/4	3/5	3/6	3/7	3/8

Flight Ops Timing - 1

- Crew duty limits:
 - 6 work days
 - 14 hour max duty day
 - 2 consecutive days over 10 hours
 - 6 h flights for 2 consecutive night flights
 - 40 flight hours per week, 10 per day
 - 36 hours crew switchover to night / day ops, can not be on a HDD

Flight Ops Timing - 2

- Fueling timing may be an issue
 - Warm-up will start on the FBO ramp
 - Will try to fuel on ramp
 - May be required to continue warm-up while GV is moving to fuel pits, then take off
 - Power will not be interrupted
- 2 hour pre-flight – need more?
- Tool control in place: 90 min prior to take-off
- **No staff movement on ramp past 300 ft from FBO**