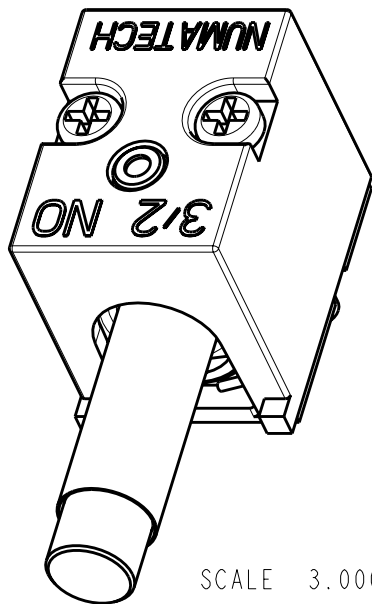
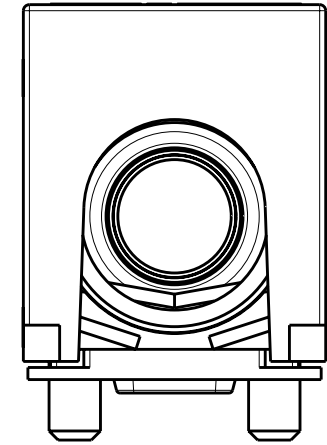
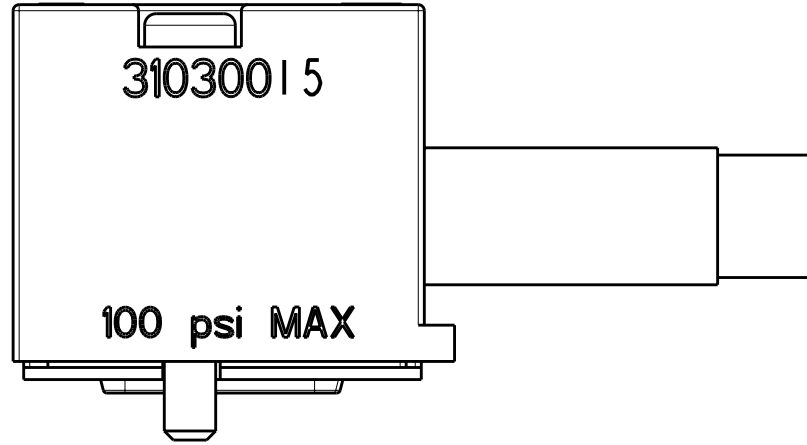
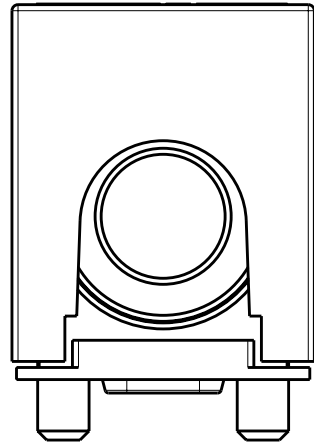
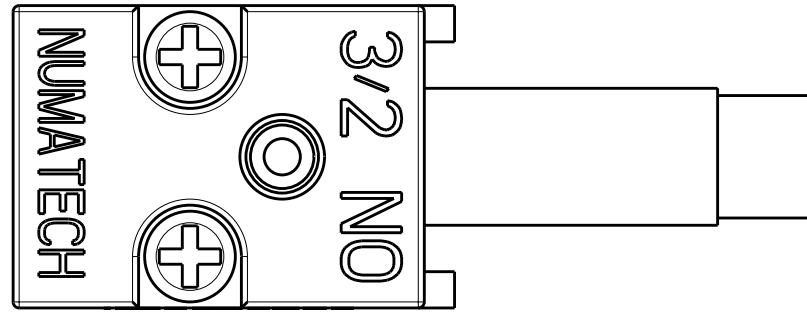


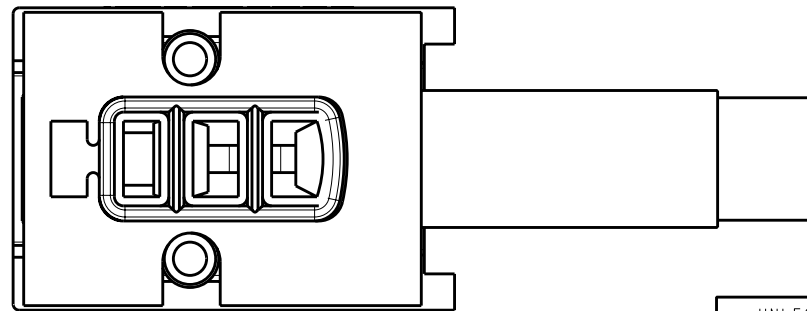
NOTES:

VITON ELASTOMERS

REV	DESCRIPTION	BY	DATE
A	RELEASE PER DCN 99-0021	DJS	19FEB99



SCALE 3.000

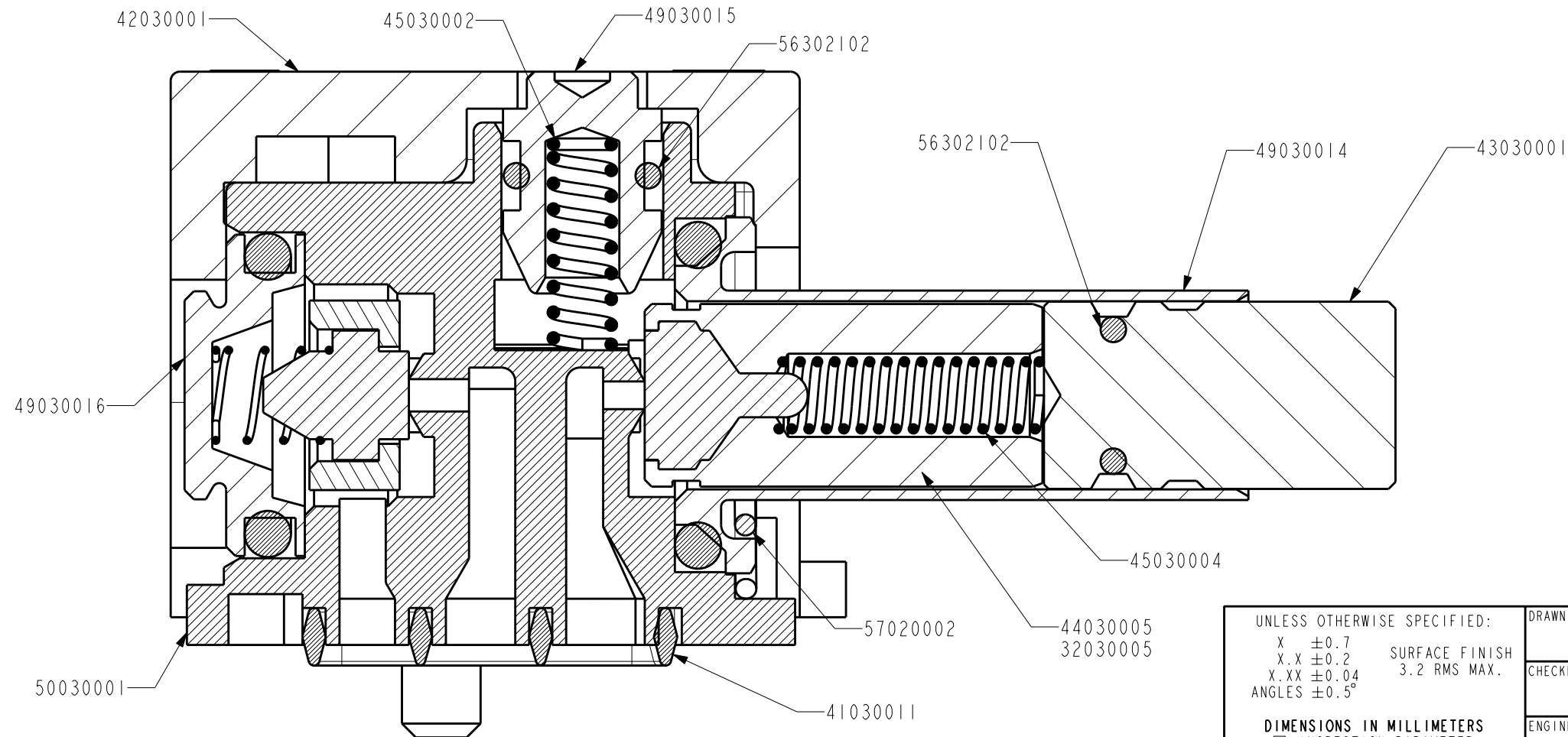
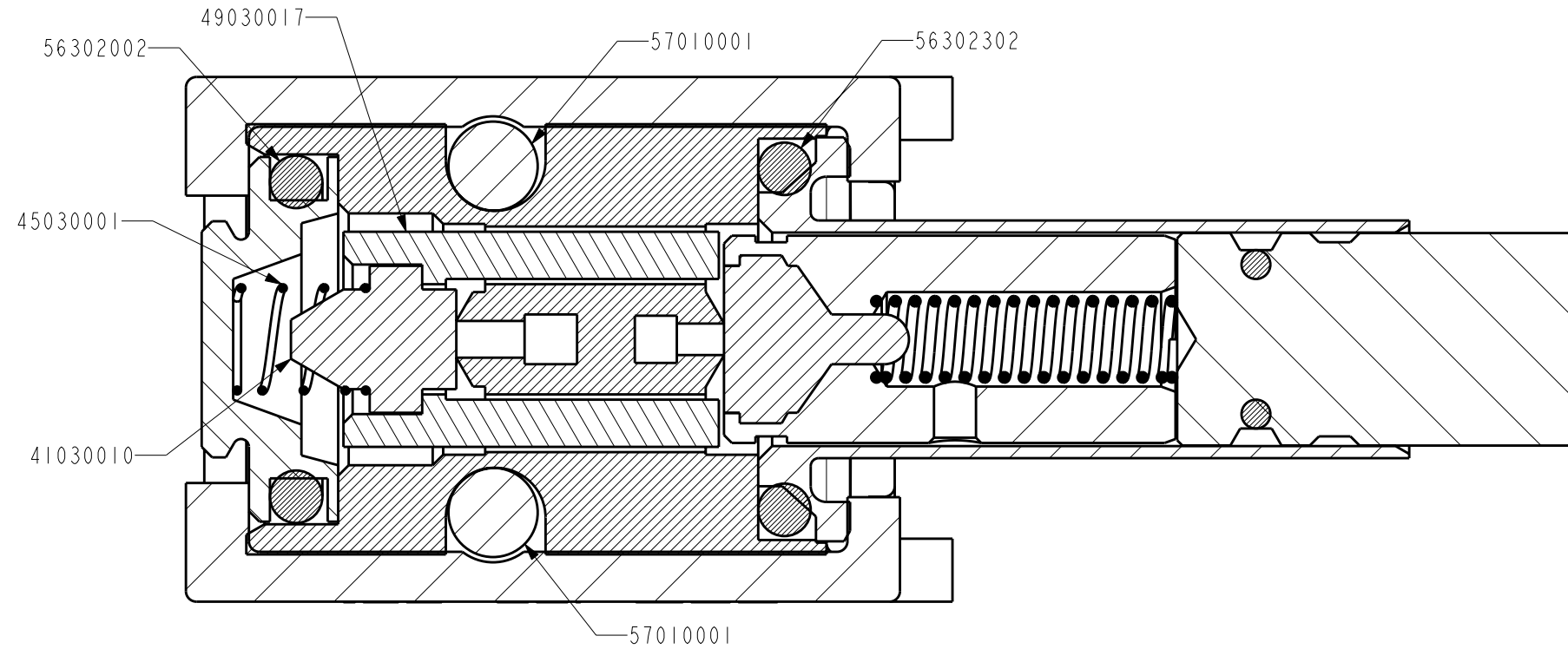


SHEET 1 OF 2

UNLESS OTHERWISE SPECIFIED: X ±0.7 X.X ±0.2 SURFACE FINISH X.XX ±0.04 3.2 RMS MAX. ANGLES ±0.5°		DRAWN DJS	DATE 1/20/98	NUMATECH, INC. WIXOM, MI
DIMENSIONS IN MILLIMETERS ☐ INSPECTION PARAMETER BREAK ALL SHARP EDGES .13-.38 FILLETS AND ROUNDS .38 MAX. ALL DRILL POINTS 118° PRINTED COPIES UNCONTROLLED.		CHECKED	DATE	
		ENGINEER DJS	DATE 1/20/98	PART NAME 10mm N.O. VALVE ASSEMBLY
		SCALE: 4.000	B	PART NUMBER 31030015

NOTES:

REV	DESCRIPTION	BY	DATE
A	RELEASE PER DCN 99-0021	DJS	19FEB99



SHEET 2 OF 2

UNLESS OTHERWISE SPECIFIED:
 X ±0.7 SURFACE FINISH
 X.X ±0.2 3.2 RMS MAX.
 X.XX ±0.04
 ANGLES ±0.5°

DIMENSIONS IN MILLIMETERS
 □ INSPECTION PARAMETER
 BREAK ALL SHARP EDGES .13-.38
 FILLETS AND ROUNDS .38 MAX.
 ALL DRILL POINTS 118°
 PRINTED COPIES UNCONTROLLED.

DRAWN	DATE
DJS	1/16/98
CHECKED	DATE
ENGINEER	DATE
DJS	1/16/98
SCALE: 8.000	B

NUMATECH, INC.
 WIXOM, MI

PART NAME	N.O. VALVE TOP ASSEMBLY
PART NUMBER	31030015